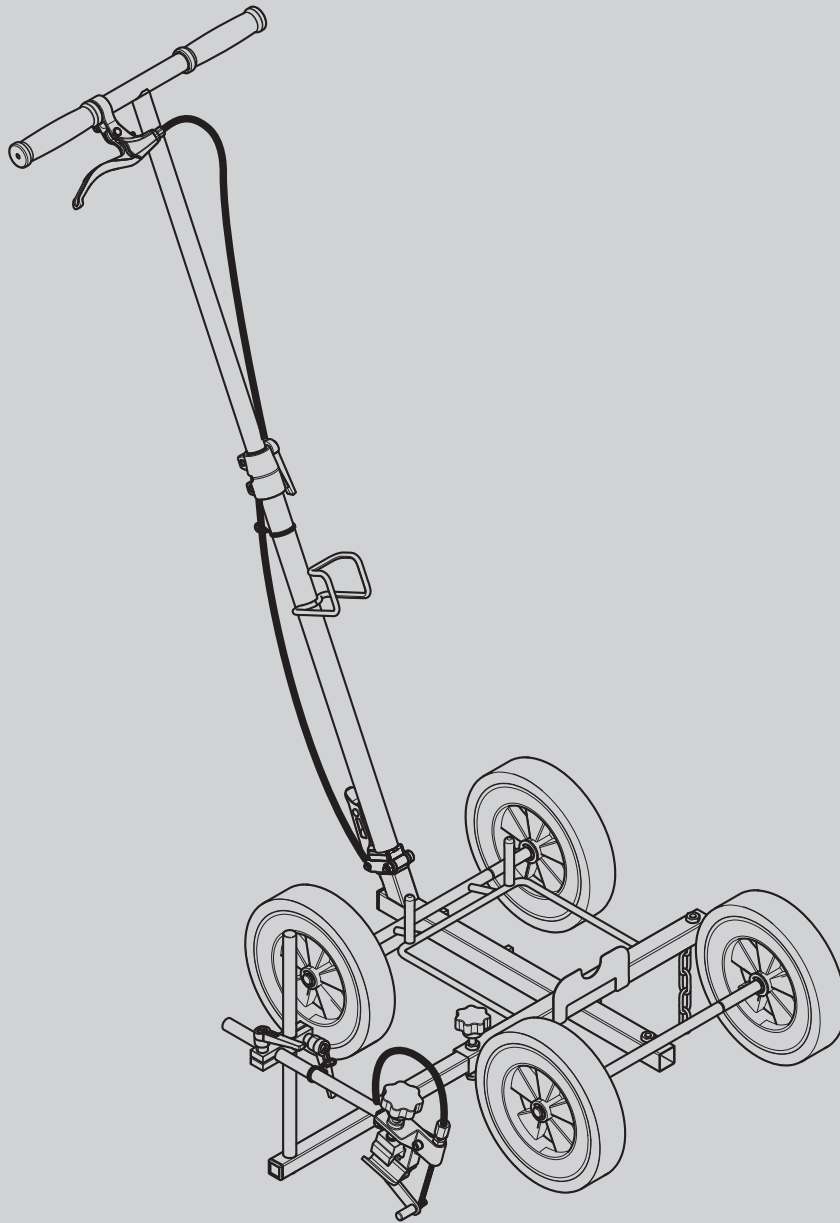


**WAGNER**



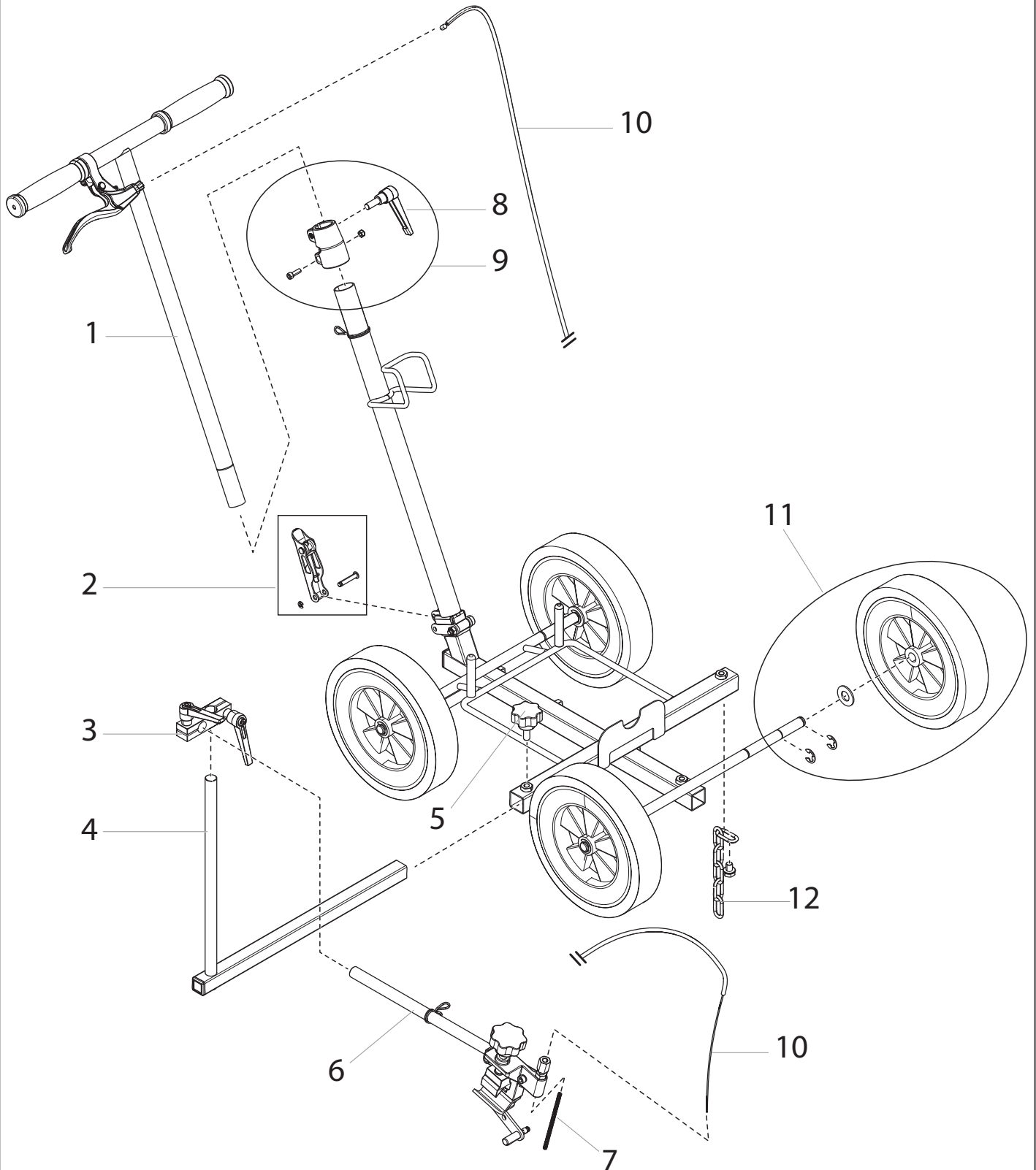
# LINECART

## ACCESSORY CART

### OPERATING INSTRUCTIONS

DE EN FR NL IT  
ES PT DA SV

ERSATZTEILE / SPARE PARTS / PIÈCES DE RECHANGE /  
ONDERDELEN / PEZZI DI RICAMBIO / PIEZAS DE REPUESTO /  
PEÇAS DE REPOSIÇÃO / RESERVEDELE / RESERVDELAR



<b>DE</b>	.....	<b>1 - 4</b>
<b>EN</b>	.....	<b>5 - 8</b>
<b>FR</b>	.....	<b>9 - 12</b>
<b>NL</b>	.....	<b>13 - 16</b>
<b>IT</b>	.....	<b>17 - 20</b>
<b>ES</b>	.....	<b>21 - 24</b>
<b>PT</b>	.....	<b>25 - 28</b>
<b>DA</b>	.....	<b>29 - 32</b>
<b>SV</b>	.....	<b>33 - 36</b>

- DE** Haben Sie Fragen zu den verwendbaren Materialien? In unserem SprayGuide finden Sie Tipps und Verarbeitungsinformationen zu einer Vielzahl von Materialien, die von unseren Experten getestet worden sind.
- EN** Do you have any questions about the products that can be used? In our SprayGuide you will find tips and processing information on a variety of products that have been tested by our experts.
- FR** Vous avez des questions sur les produits qu'il est possible d'utiliser avec l'appareil ? Dans notre SprayGuide, vous trouverez des conseils et des informations sur la mise en œuvre d'un grand nombre de produits testés par nos experts.
- NL** Heeft u vragen over de materialen die kunnen worden gebruikt? In onze SprayGuide vindt u tips en verwerkingsinformatie over een groot aantal materialen die door onze experts zijn getest.
- IT** Avete domande sui materiali utilizzabili? Nella nostra SprayGuide troverete consigli e informazioni sulla lavorazione di una serie di materiali testati dai nostri esperti.
- ES** ¿Tiene alguna pregunta sobre los materiales que pueden utilizarse? En nuestra SprayGuide encontrará consejos e información de procesamiento sobre una gran variedad de materiales que han sido probados por nuestros expertos.
- PT** Você tem alguma dúvida sobre os materiais que podem ser usados? Em nosso SprayGuide, você encontrará dicas e informações sobre o processamento dos diversos materiais que foram testados por nossos especialistas.
- DA** Har du spørgsmål til de materialer, der kan bruges? I vores SprayGuide finder du tips og oplysninger om forarbejdningen af en række forskellige materialer, der er blevet testet af vores eksperter.
- SV** Har du några frågor om vilka material som kan användas? I vår SprayGuide hittar du tips och bearbetningsinformation om en mängd olika material som har testats av våra experter.



[sprayguide.wagner-group.com](https://sprayguide.wagner-group.com)

## Safety instructions



Read and follow the operating instructions for the spray device you are using with the LineCart trolley.



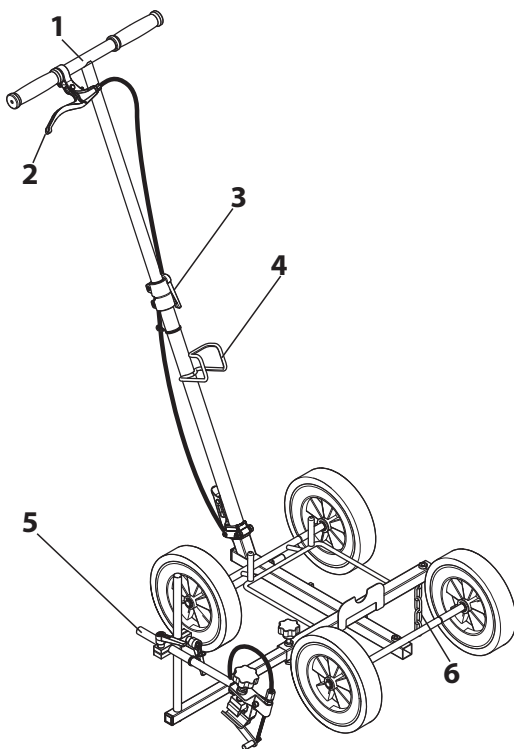
Ground the spray device during use. Make sure that the grounding chain is always in contact with the ground. Connect the Control Pro 300 Move / Spraypack 18V to the LineCart trolley's grounding chain using the supplied grounding cable. For other stationary spray devices, grounding is provided via a conductive hose and the mains connection.

## Area of application

Marking work can be carried out with the LineCart trolley in combination with a separately available airless sprayer. The LineCart trolley was specially developed for use with Control Pro 300 Move / SprayPack 18V. However, it can also be used with all other stationary airless sprayers from Wagner.

## Overview

- 1) Height-adjustable steering handle
- 2) Trigger for the spray gun
- 3) Steering handle locking mechanism
- 4) Hose holder
- 5) Gun Holder
- 6) Grounding chain

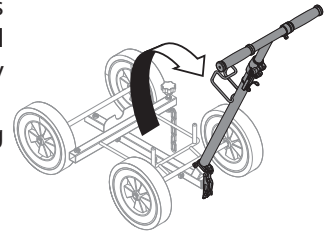


## Assembling the trolley

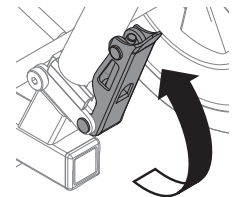


The gun holder and the trolley are connected by means of a pull cable. Take care not to pinch the cable or put too much strain on it during installation.

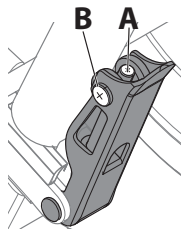
- 1) Remove the Velcro straps with which the individual components of the trolley are secured.
- 2) Carefully fold the steering handle upwards.



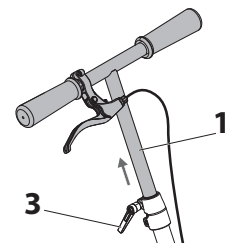
- 3) Secure the steering handle with the lock.



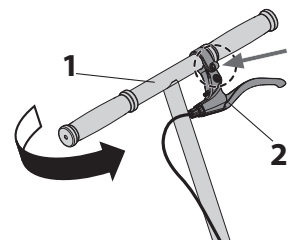
If the locking mechanism cannot be closed properly or is too loose, loosen screw (A) and readjust the locking mechanism with screw (B). Then tighten screw (A) to secure the setting.



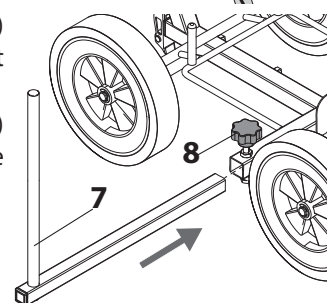
- 4) Loosen the locking mechanism (3) for the steering handle.
- 5) Pull the steering handle (1) to the desired height and secure it again.



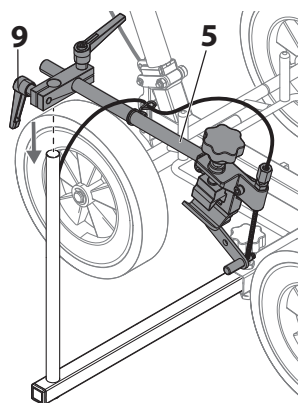
- 6) If required, the steering handle (1) can also be rotated by 180° and the trigger (2) can be turned to the desired position with the screw loosened.



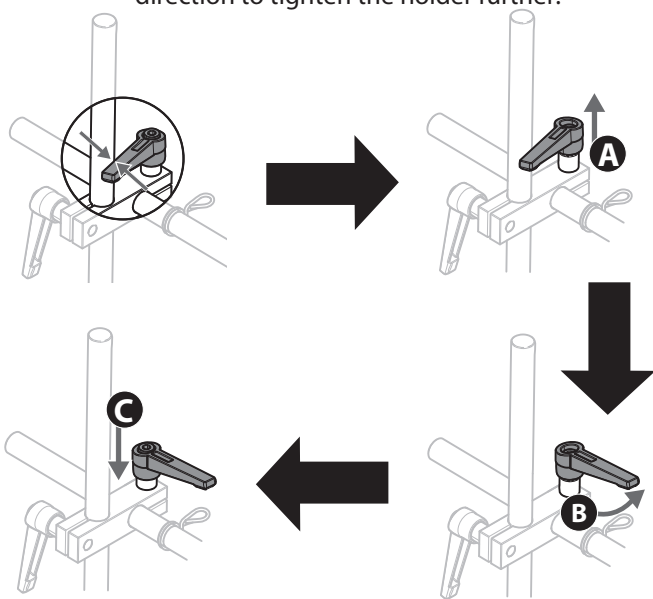
- 7) Insert the bracket (7) either on the left or right side of the trolley.
- 8) Screw in the star grip (8) on the corresponding side to secure the bracket.



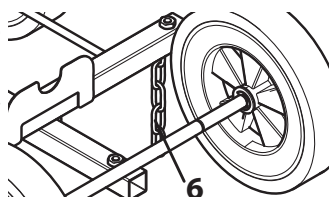
- 9) Attach the gun holder (5) to the bracket.
- 10) Slide the gun holder to the desired height and turn the lever (9) clockwise to fix the gun holder in place,



If the lever (9) encounters an obstacle, pull the lever upwards (A). Turn the lever in the opposite direction (B). Snap the lever back into place (C). Turn the lever back in the original direction to tighten the holder further.



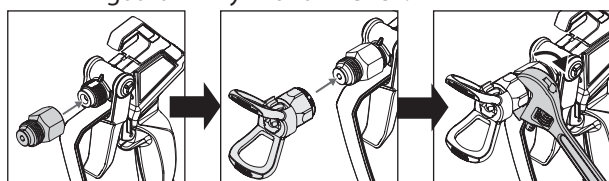
- 11) Check that the grounding chain (6) is in contact with the ground.



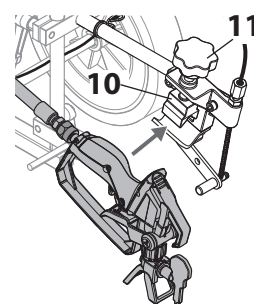
### Gun assembly



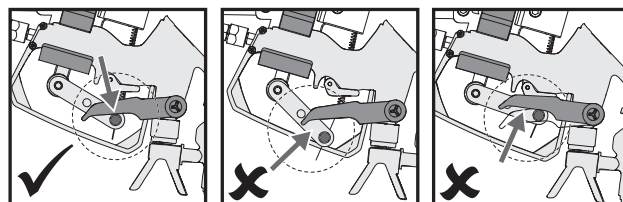
The LineCart trolley comes with a special LineStriping nozzle that ensures extremely precise lines. When using a T2 or T3 gun, the enclosed adapter and tip guard must be fitted in order to use this nozzle. Tighten the tip guard firmly with a wrench.



- 1) Insert the gun (with nozzle and hose fitted) into the gun holder. The gun handle must be seated in the screw block (10).
- 2) Turn the star grip (11) to fix the gun in place.

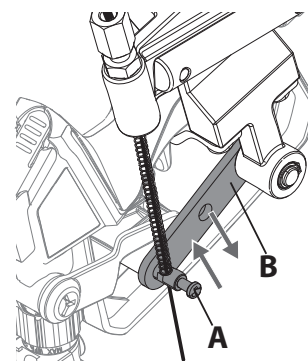


The trigger must make light contact with the lever. Otherwise, the trigger will not release properly or the gun may spray continuously.

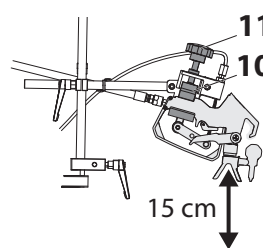


If necessary, adjust the lever as described below:

- Loosen screw (A).
- Slide lever (B) up or down to align it with the spray gun trigger.
- Retighten the screw.



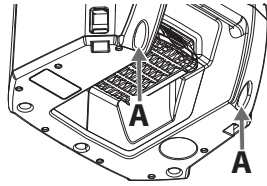
- 3) Adjust the height of the gun holder to adjust the spraying width (recommended distance between nozzle and floor: 15 cm).
- 4) Unlock the gun.



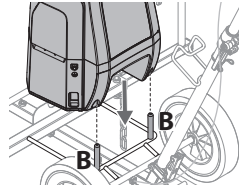
The range of accessories includes additional nozzles that can be used to influence the line width, the layer thickness and the products that can be processed.

## Assembly Control Pro 300 Move / Spraypack 18V

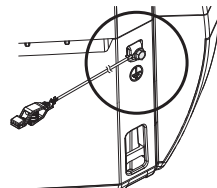
- 1) There are two openings (A) on the rear of the device.



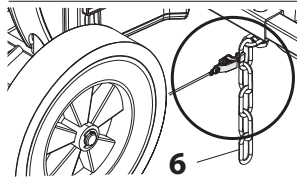
- 2) Align these two openings with the connector pins (B) on the LineCart trolley and slide the device into place.



- 3) Fit the grounding cable supplied with the device to the side of the device.

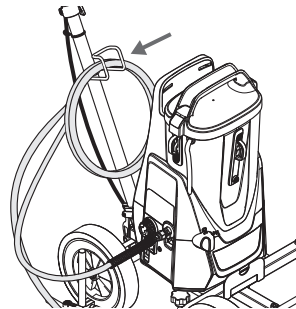


- 4) Connect the grounding cable to the LineCart trolley's grounding chain (6).

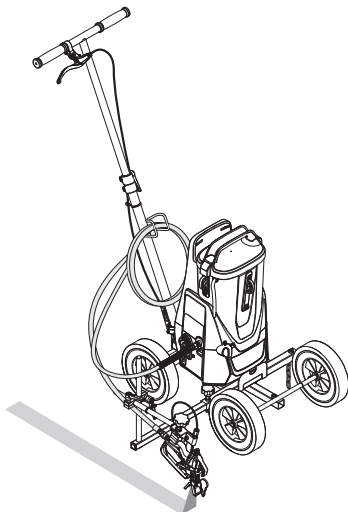


- 5) Connect the hose to the hose connection on the device.

- 6) Place the hose in the hose holder in such a way that it cannot come into contact with the wheels during operation.



To commission the device, please follow the instructions in the corresponding operating instructions.

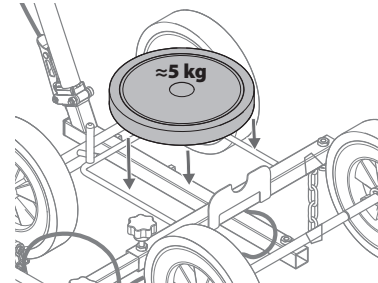


## Assembly of stationary airless sprayer

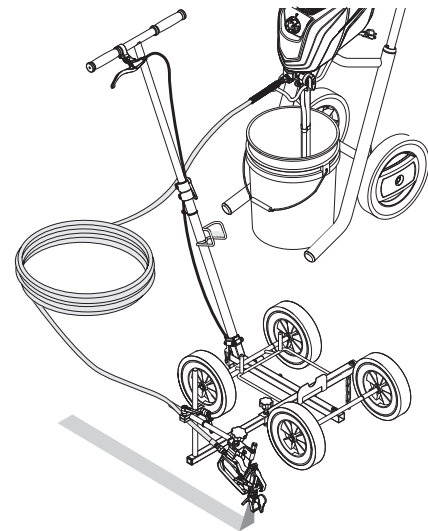
- 1) Connect the hose to the hose connection on the device.
- 2) Position the hose so that it cannot come into contact with the wheels during operation.



To improve steering stability, we recommend attaching an additional weight of approx. 5 kg on the mobile base.



To commission the device, please follow the instructions in the corresponding operating instructions.





### Correction of Malfunctions

Problem	Solution
The strip width is incorrect	<ul style="list-style-type: none"> <li>• Adjust the distance between the gun and floor</li> <li>• Dilute the paint according to the manufacturer's instructions.</li> <li>• Use a different nozzle size (see accessories)</li> </ul>
The shape of the strip is uneven	<ul style="list-style-type: none"> <li>• Rotate the nozzle 180° and pull the trigger. This will clear a partially clogged nozzle</li> <li>• Depending on the device used, reduce the pump speed or spray pressure.</li> </ul>
The coating thickness of the strip is too low	<ul style="list-style-type: none"> <li>• Use a larger nozzle (see accessories)</li> <li>• Walk more slowly</li> </ul>
The coating thickness of the strip is too high	<ul style="list-style-type: none"> <li>• Use a smaller nozzle (see accessories)</li> <li>• Walk faster</li> </ul>

### Accessories



When selecting the nozzle, observe the maximum nozzle size specified in the operating instructions for the spray device and the recommendations of the product manufacturer. Use a smaller nozzle for low-viscosity products and a larger nozzle for high-viscosity products.

- Item number: 697 - XYY
- X = width of the strip (in inches) on the surface at a gun distance of 6 inches (152 mm)
- YY = nozzle bore in thousandths of an inch
- Example: 419 = 4-inch-wide strip, 0.019-inch nozzle bore = part number 697-419

X: WIDTH OF THE STRIP		YY: NOZZLE BORE (INCH)						
Inches	MM	0.013	0.015	0.017	0.019	0.021	0.023	0.027
2	51		215	217	219			
4	102	413	415	417	419	421	423	427
6	152		615	617	619	621		
8	203					821	823	

### Examples

With the same strip width, a larger nozzle bore leads to a higher layer thickness

nozzle 419                  423                  429

4" (10 cm)                  4" (10 cm)                  4" (10 cm)

With the same nozzle bore, a larger strip width results in a lower coating thickness

nozzle 219                  419                  619

2" (5 cm)                  4" (10 cm)                  6" (15 cm)

### Spare parts



The overview of spare parts can be found on the fold-out page at the beginning of these operating instructions.

Item	Description	Order no.
1	Steering handle, complete	2482272
2	Steering handle lock	2482269
3	Lever and clamp	2482123
4	Mounting bracket	2483023
5	Star knob (M8-20)	2483111
6	Gun holder, complete.	2482270
7	Spring	2483110
8	Lever (M8-20)	2483108
9	Steering handle locking mechanism	2482268
10	Pull cable, complete	2482271
11	Wheel, complete	2482265
12	Grounding chain, complete	2482266





**D** **J. WAGNER GMBH**  
Otto-Lilienthal-Str. 18  
88677 Markdorf  
T +49 0180 - 55 92 46 37  
hotline@wagner-group.com

**BE** **WSB FINISHING EQUIPMENT**  
Veilinglaan 56-58  
1861 Wolvertem  
T +32 2 269 46 75  
verkoop@wsb-benelux.be

**CZ** **E-CORECO S.R.O.**  
Na Roudné 102  
301 00 Plzeň  
T +42 734 792 823  
F +42 227 077 364

**F** **J. WAGNER FRANCE SARL**  
Parc Work Center  
8 Route des Bois, Bâtiment C  
F-38500 Voiron - France  
T +33 (0)4 58 09 04 12

**GB** **UK IMPORTER  
WAGNER SPRAYTECH (UK) LTD**  
Innovation Centre  
Silverstone Park, Silverstone  
Northants NN12 8GX  
T + 44 (0) 1327 368410

**DK** **DVA A/S**  
Marielundvej 48 C  
2730 Herlev  
T +45 70 234 239

**DK** **ORKLA HOUSE CARE DANMARK A/S**  
Stationsvej 13  
3550 Slangerup  
Danmark  
T +45 47 33 74 00  
F +45 47 33 74 01

**NOR** **ORKLA HOUSE CARE NORGE AS**  
Nedre Skøyen vei 26,  
PO Box 423, Skøyen  
0213 Oslo  
T +47 22 54 40 19  
kundservice.ohc@orkla.no

**PL** **WAGNER-SERVICE SP. Z O.O.**  
ul. E. Imieli 30  
41-605 Świętochłowice  
T +48 32 346 37 00  
wsparcie@wagner-polska.com.pl

**S** **ORKLA HOUSE CARE AB**  
Box 133  
564 23 Bankeryd  
Sweden  
T +46(0)36 37 63 00  
info@anza.se

**NL** **WSB FINISHING EQUIPMENT B.V.**  
De Heldinnenlaan 200  
3543 MB Utrecht  
T +31 30 241 41 55  
verkoop@wsb-benelux.nl

**CH** **J. WAGNER AG**  
Industriestraße 22  
9450 Altstätten  
T +41 71 - 7 57 22 11  
F +41 71 - 7 57 23 23

**E**  
**P** **MAKIMPORT  
HERRAMIENTAS, S.L.**  
C/ Méjico nº 6  
Pol. El Descubrimiento  
28806 Alcalá de Henares (Madrid)  
T +34 902 199 021 /  
+34 91 879 72 00  
F +34 91 883 19 59

**AUS** **WAGNER SPRAYTECH  
AUSTRALIA PTY. LTD.,**  
8 – 10 Dansu Court  
Hallam, Victoria, 3803  
T +61 3 9587 2000  
F +61 3 9580 9120

**I** **WAGNER SPA**  
Via S. Vecchia 109,  
23868 Valmadrera (LC)  
Mobile +39 0341 210100  
wagner\_it\_va@wagner-group.com

Irrtümer und Änderungen vorbehalten.

Not responsible for errors and changes.

Sous réserves d'erreurs et de modifications.

Fouten en wijzigingen voorbehouden.

Con riserva di errori e modifiche.

Errores y modificaciones reservados.

Salvo erros e alterações

Vi tager forbehold for eventuelle fejl og ændringer.

Vi påtar oss inget ansvar for eventuella felaktigheter

och förbehåller oss rätten att utföra ändringar.

Part. No. 2481393 B

12/2025\_RS

© Copyright by J.Wagner GmbH