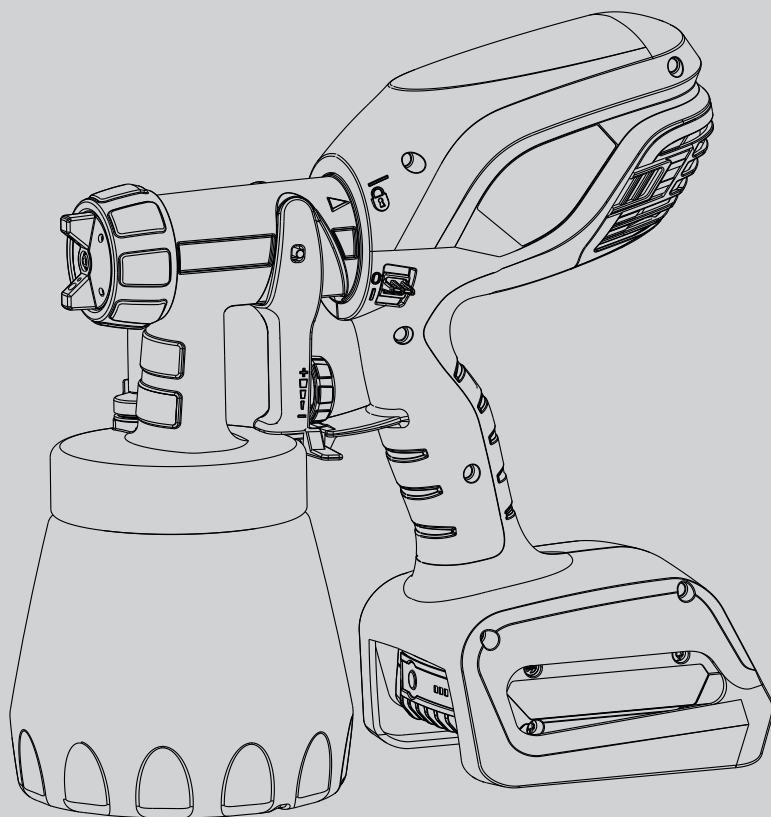
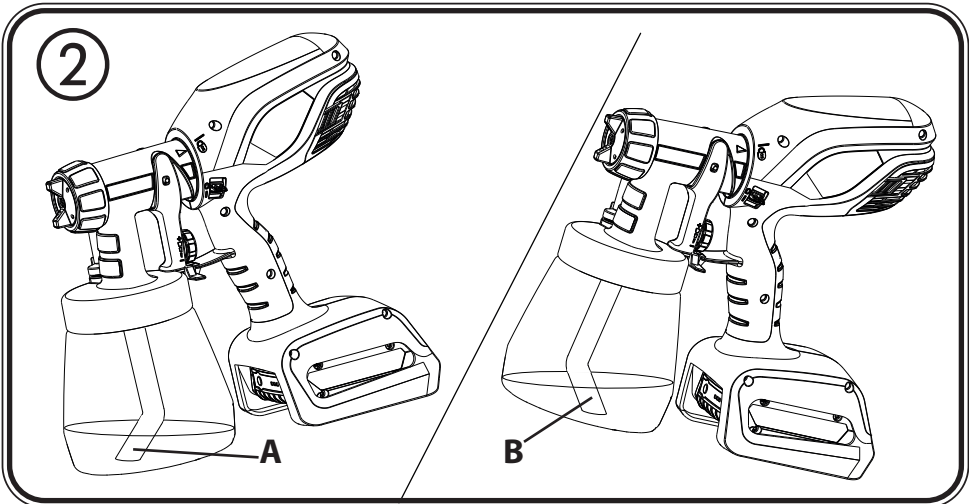


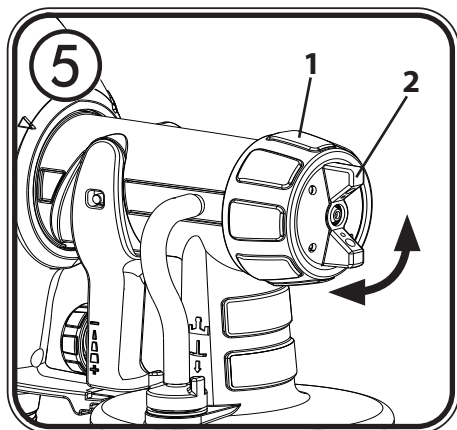
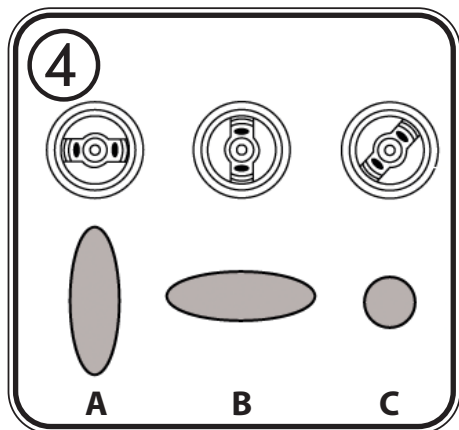
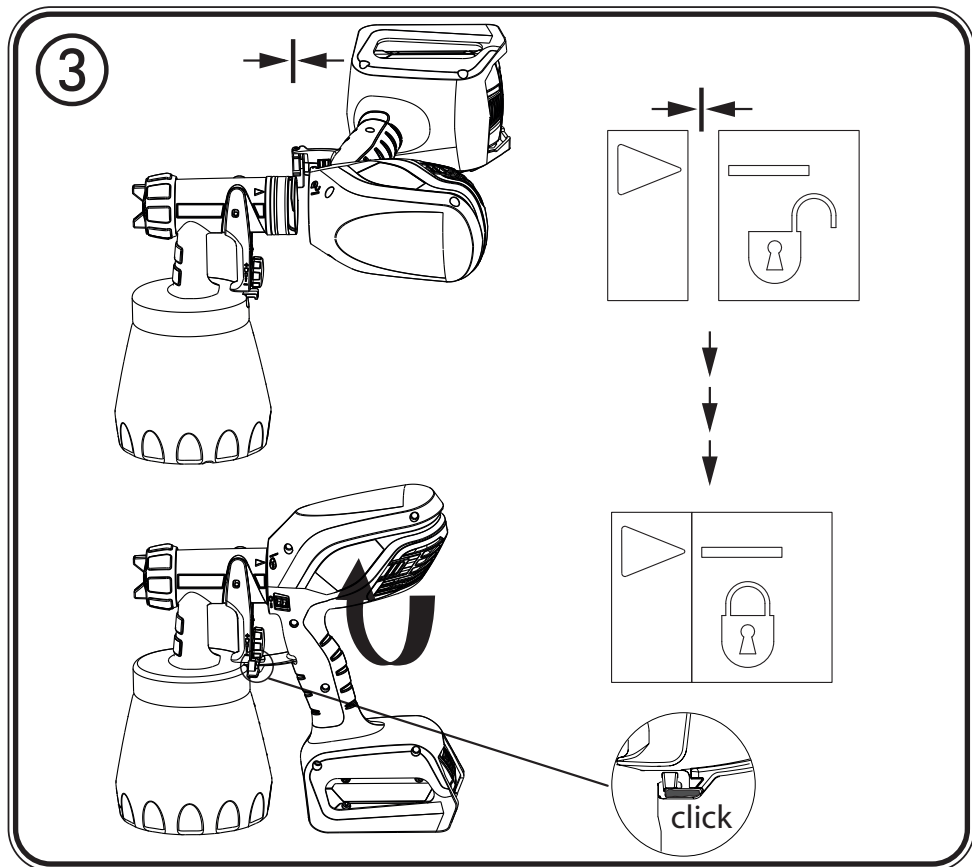
WAGNER

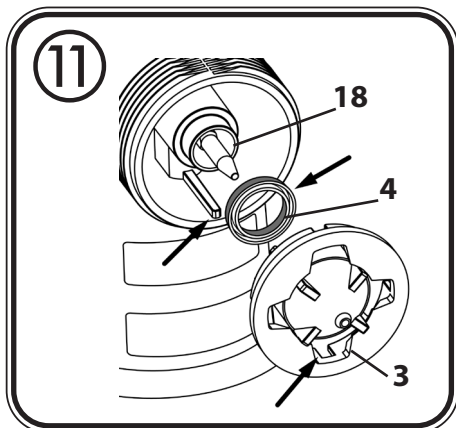
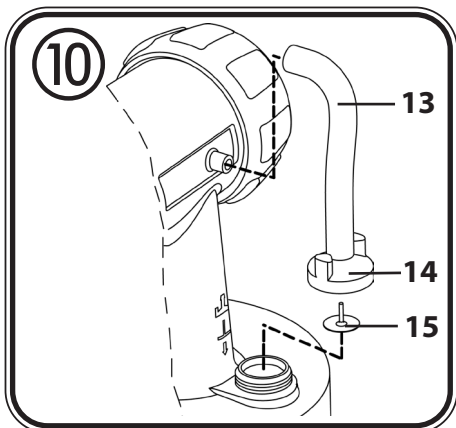
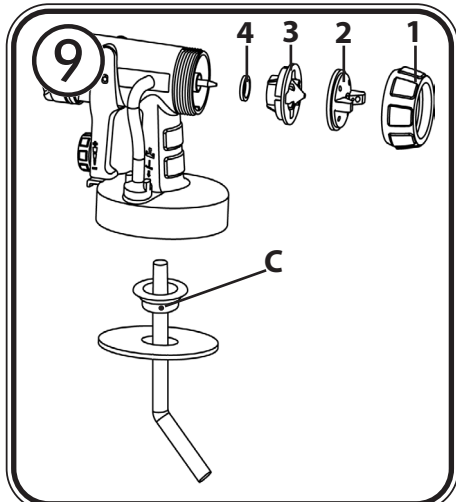
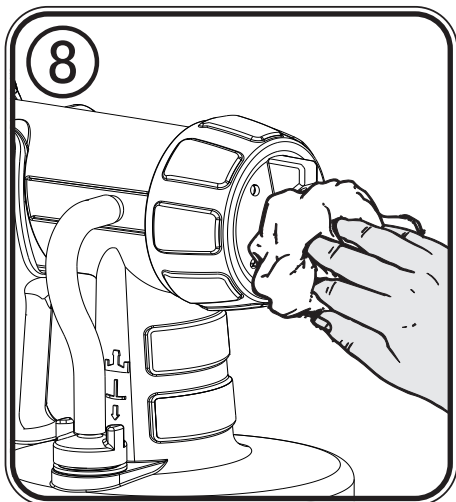
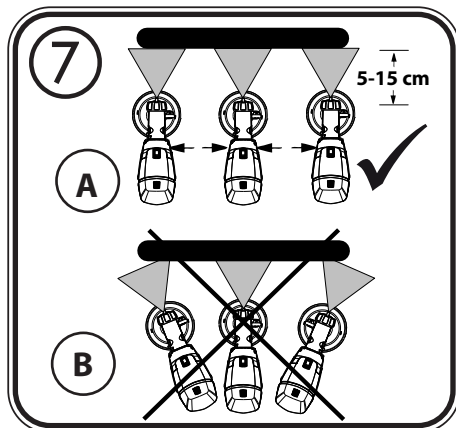
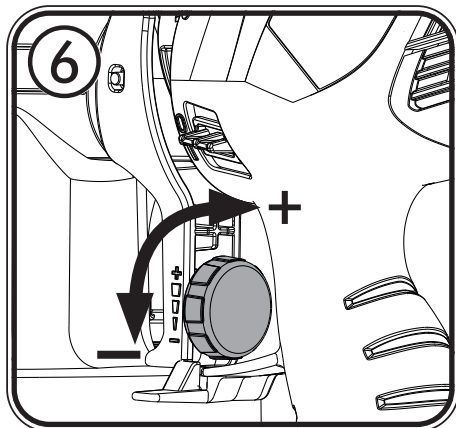


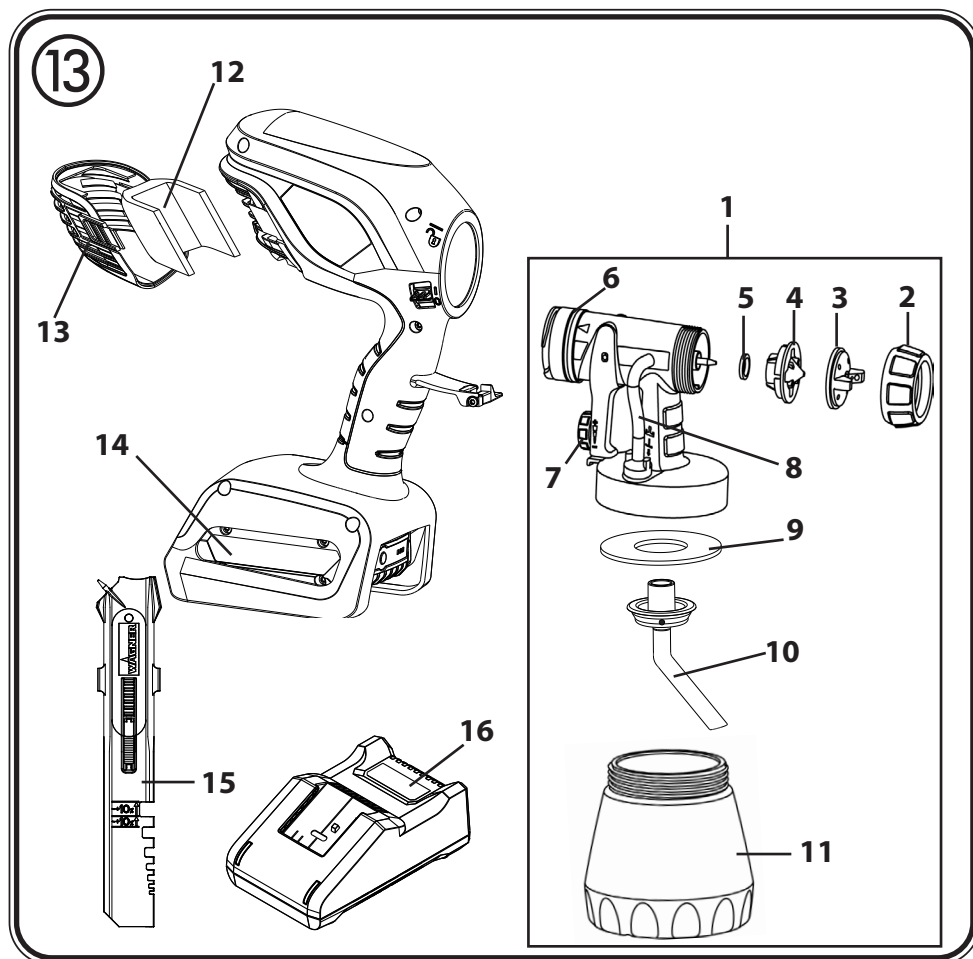
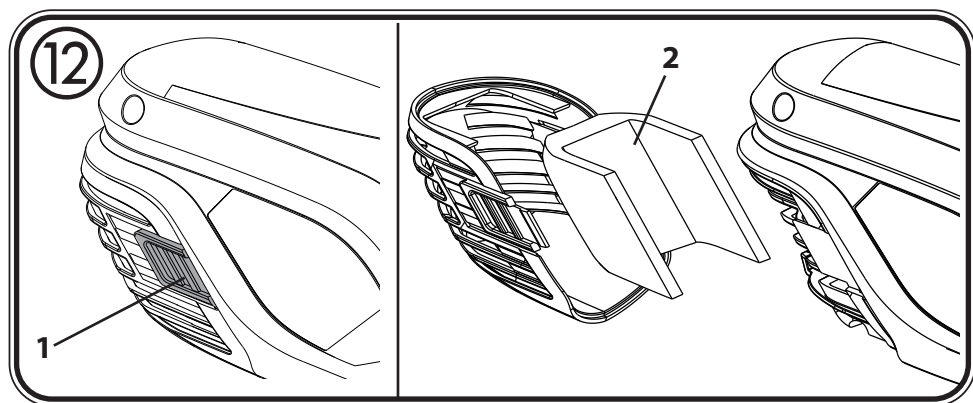
WOOD & METAL SPRAYER W 250 18V ORIGINAL INSTRUCTIONS

AUS









MANY THANKS FOR PLACING YOUR TRUST IN US

We would like to congratulate you on purchasing this brand product from Wagner; we are sure that you will enjoy working with it greatly.




Please read the Operating Manual carefully and observe the safety information before starting the device. Store the Operating Manual in a safe place close to the product in case it needs to be used by someone else.

We would be happy to be of assistance if you have any questions, suggestions or requests. Please contact us via the phone number included on the back page or via our homepage, **wagneraustralia.com.au**.

Contents

1. Explanation of symbols used	7
2. General Safety Instructions	7
3. Safety Instructions for Spray Guns	10
4. Safety instructions for the charger and battery.....	11
5. Description/ Scope of delivery	12
6. Coating Materials.....	13
7. Charging	13
8. Start-up	14
9. Adjusting the desired Spray Setting	14
10. Adjusting the Material Volume (Fig. 6)	15
11. Spray Technique.....	15
12. Interruption of Work.....	15
13. Taking Out of Operation and Cleaning.....	15
14. Maintenance	16
15. Spare Parts List	17
16. Accessories.....	17
17. Correction of Malfunctions.....	18
18. Technical Data.....	19
19. Environmental protection.....	20
20. Important Note regarding Product Liability!	20

1. Explanation of symbols used

	This symbol indicates a potential danger for you or for the device. Under this symbol you can find important information on how to avoid injuries and damage to the device.
	Danger of electrical shock
	Indicates tips for use and other particularly useful information.

2. General Safety Instructions

Caution! *Read all safety warnings and all instructions.* Failure to follow the warnings and instructions may result in electric shock, fire and/or serious injury. **Save all warnings and instructions for future reference.** The term "power tool" in the warnings refer to your mains-operated (corded) power tool or battery-operated (cordless) power tool.



1. Safety at the workplace

- a) **Keep your workplace clean and well lit.** Disorder or unlit workplaces may result in accidents.
- b) **Never use the tool in hazardous areas that contain flammable liquids, gases or dusts.** Power tools generate sparks that can ignite the dust or vapors.
- c) **Keep children and other persons away when using the power tool.** You can lose control of the tool if you are distracted.

2. Electrical Safety

- a) **The tool plug must fit into the socket. The plug may not be modified in any form. Do not use adaptor plugs together with protective-earthed tools.** Unmodified plugs and suitable sockets reduce the risk of an electric shock.
- b) **Avoid physical contact with earthed surfaces such as pipes, heating elements, stoves and refrigerators.** The risk through electric shock increases if your body is earthed.
- c) **Keep the equipment away from rain and moisture.** The risk of an electric shock increases if water penetrates electrical equipment.
- d) **Do not misuse the mains lead by carrying the tool by the lead, hanging it from**

the lead or by pulling on the lead to remove the plug. Keep the lead away from heat, oil, sharp edges or moving tool parts. *Damaged or twisted leads increase the risk of an electric shock.*

- e) If you work outdoors with a power tool, only use extension cables suitable for outdoor use.** *The use of an extension lead that is suitable for outdoors reduces the risk of an electric shock.*
- f) If you cannot avoid using the tool in a damp environment, use a residual current operated circuit-breaker.** *Using a residual current operated circuit-breaker avoids the risk of electric shock.*

3. Safety of Persons

- a) Be attentive. Pay attention to what you are doing and work sensibly with a power tool. Do not use the tool if you are tired or under the influence of drugs, alcohol or medication.** *Just a moment of inattentiveness while using the tool can lead to serious injuries.*
- b) Wear personal safety equipment and always wear safety goggles** *Wearing personal protective equipment, such as dust mask, non-slip safety shoes, safety helm or ear protection, depending on the type of power tools, reduces the risk of injury.*
- c) Avoid accidental starting-up. Make sure that the electric tool is switched off before you connect it to the power supply, pick it up or carry it.** *Accidents can occur if you carry the power tool while your finger is on the switch or if you connect the power tool to the power supply which it is on.*
- d) Remove setting tools or wrenches before switching on the power tool.** *A tool or wrench that is in a rotating tool part can lead to injuries.*
- e) Avoid an unnatural posture. Ensure that you are standing securely and have your balance at all times.** *This ensures that you can control the tool better in unexpected situations.*
- f) Wear suitable clothing. Do not wear wide clothing or jewellery. Keep your hair, clothes and gloves away from moving parts.** *Loose clothing, jewellery or long hair can be caught in moving parts.*
- g) If devices are provided for the connection of dust extraction and collection facilities, ensure these are connected and properly used.** *Use of dust collection can reduce dust-related hazards.*
- h) Do not let familiarity gained from frequent use of tools allow you to become complacent and ignore tool safety principles.** *A careless action can cause severe injury within a fraction of a second.*

4. Usage and treatment of the electric tool

- a) **Do not overload the tool. Use the power tool designed for the work that you are doing.** *You work better and safer in the specified performance range if you use the suitable power tool.*
- b) **Do not use power tools whose switch is defective.** *A power tool that cannot be switched on or off is dangerous and has to be repaired.*
- c) **Remove the plug from the socket before carrying out tool settings, changing accessories or putting the tool away.** *This precautionary measure prevents unintentional starting of the tool.*
- d) **Store unused power tools so that they are inaccessible to children. Do not let persons use the tool who are not familiar with it or who have not read these instructions.** *Power tools are dangerous when they are used by inexperienced persons.*
- e) **Take proper care of your tools. Check whether the moving parts function trouble-free and do not jam, whether parts are broken or damaged so that the tool function is impaired. Have damaged parts repaired before using the tool.** *Many accidents have their origin in power tools that have been maintained badly.*
- f) **Keep cutting tools sharp and clean.** *Properly maintained cutting tools with sharp cutting edges are less likely to bind and are easier to control.*
- g) **Use the power tool, accessories and tool bits etc. in accordance with these instructions, taking into account the working conditions and the work to be performed.** *Use of the power tool for operations different from those intended could result in a hazardous situation.*
- h) **Keep handles and grasping surfaces dry, clean and free from oil and grease.** *Slippery handles and grasping surfaces do not allow for safe handling and control of the tool in unexpected situations.*

5. Battery tool use and care

- a) **Recharge only with the charger specified by the manufacturer.** *A charger that is suitable for one type of battery pack may create a risk of fire when used with another battery pack.*
- b) **Use power tools only with specifically designated battery packs.** *Use of any other battery packs may create a risk of injury and fire.*
- c) **When battery pack is not in use, keep it away from other metal objects, like paper clips, coins, keys, nails, screws or other small metal objects, that can make a connection from one terminal to another.** *Shorting the battery terminals together may cause burns or a fire.*

- d) **Under abusive conditions, liquid may be ejected from the battery; avoid contact. If contact accidentally occurs, flush with water. If liquid contacts eyes, additionally seek medical help.** *Liquid ejected from the battery may cause irritation or burns.*
- e) **Do not use a battery pack or tool that is damaged or modified.** *Damaged or modified batteries may exhibit unpredictable behaviour resulting in fire, explosion or risk of injury.*
- f) **Do not expose a battery pack or tool to fire or excessive temperature.** *Exposure to fire or temperature above 130 °C may cause explosion.*
- g) **Follow all charging instructions and do not charge the battery pack or tool outside the temperature range specified in the instructions.** *Charging improperly or at temperatures outside the specified range may damage the battery and increase the risk of fire.*

6. Service

- a) **Have your power tool serviced by a qualified repair person using only identical replacement parts.** *This will ensure that the safety of the power tool is maintained.*
- a) **Never service damaged battery packs.** *Service of battery packs should only be performed by the manufacturer or authorized service providers.*

3. Safety Instructions for Spray Guns

- The device may not be used in workplaces covered by the explosion-protection regulations.
- There must be no sources of ignition such as, for example, open fires, smoke of lit cigarettes, cigars and tobacco pipes, sparks, glowing wires, hot surfaces, etc. in the vicinity during spraying.
- Do not spray any substances whose hazard potential is not known.
- Remove the battery before carrying out any work on the spray gun.
- Do not use the spray guns to spray flammable substances.
- The spray guns are not to be cleaned with flammable solvents.
- Caution against dangers that can arise from the sprayed substance and observe the text and information on the containers or the specifications given by the substance manufacturer.
- **Caution!** Wear breathing equipment: Paint mist and solvent vapors are damaging to health. Always wear breathing equipment and only work in well ventilated rooms or using supplementary ventilating equipment. It is advisable to wear working clothing, safety glasses, ear protection and gloves.



CAUTION: DANGER OF INJURY!

Never point the spray stream towards human beings or animals.



Sockets and plugs must be masked. Risk of an electric shock as a consequence of sprayed material entering the socket!



Attention! Never operate the device if the nozzle seal is either damaged or missing. If the nozzle seal is either missing or damaged liquids can enter the device and increase the risk of an electric shock. Check the nozzle seal before each use.

- When working with the W 250 indoors as well as outdoors ensure that no solvent vapors are sucked in by the spray gun.
- When working outdoors, be aware of the wind direction. Wind can carry the coating substance across greater distances - thus causing damage. When working indoors, provide for adequate ventilation.
- Do not let children handle the device.
- Never open the device yourself in order to carry out repairs in the electrical system!



The units may only be used with a functional valve. **If paints rises in the ventilating hose (Fig. 1, item 16) do not operate the unit further!** Dismantle and clean the ventilating hose, valve and diaphragm and replace the diaphragm if necessary.


- **Do not lay the spray gun.**

With original WAGNER accessories and spare parts, you have the guarantee that all safety regulations are fulfilled.

4. Safety instructions for the charger and battery



Only use the tool with BOSCH PROFESSIONAL compatible GBA 18V batteries with at least 2.0 Ah and suitable chargers. The battery voltage must match the battery charging voltage of the charger. Do not charge non-rechargeable batteries. Otherwise there is a risk of fire and explosion.

-  **Only use the charger indoors and keep it away from moisture.** Water penetrating into a power tool increases the risk of an electric shock.
- **Keep the charger clean.** There is a risk of electric shock due to contamination.
- **Before every use, check the charger, cable and plug. Do not use the charger if it is damaged. Do not open the charger yourself and only have it repaired by qualified specialist personnel using original spare parts.** Damaged chargers, cables and plugs increase the risk of electric shock.
- **Do not operate the charger on easily combustible surfaces (e.g. paper, textiles, etc.) or in combustible environments.** There is a risk of fire due to the heating of the charger during charging.
- **The battery is delivered partially charged.** To ensure full battery performance, fully charge the battery in the charger before first use.
- **Only use the battery in the manufacturer's products.** This is the only way to protect the battery from dangerous overloading.
- **Keep batteries out of the reach of children.**
- **Do not open the battery. There is a risk of a short circuit.**

- **Vapours may also escape if the battery is damaged or used improperly.** Take in fresh air and consult a doctor if you have any symptoms. The vapours may irritate the respiratory tract.
- **If the battery is defective, liquid may leak out and wet adjacent objects.** Check affected parts. Clean them or replace them if necessary.
- **The battery can be damaged by sharp objects such as nails or screwdrivers or by external force.** An internal short circuit may occur and the battery may burn, smoke, explode or overheat.
- **Never service damaged batteries.** All maintenance of batteries should only be carried out by the manufacturer or authorised service centres.
- **Protect the battery from heat, e.g. also from permanent sunlight, fire, dirt, water and moisture.** There is a risk of explosion and short circuit.
- **Operate and store the battery only at an ambient temperature between -20°C and +50°C.** Do not leave the battery in the car in summer, for example. At temperatures < 0°C, performance may be restricted depending on the unit.
- **Charge the battery only at ambient temperatures between 0°C and +35°C.** Charging outside the temperature range can damage the battery or increase the risk of fire.
- **Lithium-ion batteries are subject to the Dangerous Goods Legislation requirements.** The batteries are suitable for road-transport by the user without further restrictions. When shipping by third parties (e.g.: by air transport or forwarding agency), special requirements on packaging and labelling must be observed. For preparation of the item being shipped, consulting an expert for hazardous material is required. Dispatch battery packs only when the housing is undamaged. Tape or mask off open contacts and pack up the battery in such a manner that it cannot move around in the packaging. Please also observe the possibility of more detailed national regulations.

5. Description/ Scope of delivery

Description/ Scope of delivery (Fig. 1)	
1) Air Cap	2) Nozzle
3) Union nut	4) Spray attachment
5) Trigger	6) Spray gun rear part
7) Air filter cover	8) ON/OFF switch
9) Charger*	10) Material volume adjustment
11) Battery lock*	12) Rechargeable battery*
13) Stir stick	14) Container
15) Valve	16) Ventilating hose
17) Replacement nozzle seal**	18) Lubricating grease**

* Not included with all models.

** This is inside the container: remove it before starting operations!

6. Coating Materials

Coating Materials Suitable for Use

Glazes, wood preservatives, staining sealers, oils, stains	undiluted
Paints containing solvents and water-soluble paints, primers	dilute by 5 - 10%
Wall paints	dilute by 10%

Coating Materials Not Suitable for Use

Materials that contain highly abrasive components, facade paint, caustic solutions and acidic coating substances. Flammable materials.

Paints, varnishes and glazes can be sprayed undiluted or slightly diluted.

1. Stir the material up and put the required amount into the paint container.
2. If the convey capacity is too low, add 5 - 10% dilution step-by-step until the convey capacity fulfils your requirements.

7. Charging

Before connecting to the mains, make sure that the mains voltage corresponds to the specification on the charger's rating plate.

1. Plug charger cord into a standard power outlet (the charger's green indicator light (4) will switch ON).

Explanation of the indicator lights



When you insert the battery (1) into the charger (2) the green indicator light (4) will begin to "BLINK". This indicates that the battery is charging.



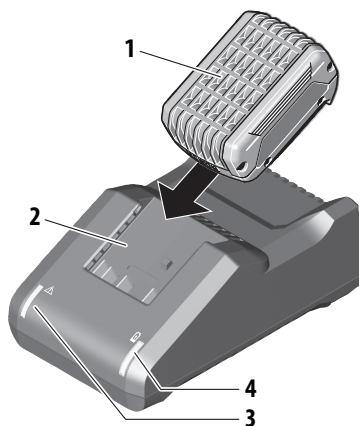
A continuous green indicator light (4) indicates that the battery is fully charged.



A steady red indicator light (3) means that the battery is outside the proper temperature ranges (between 0°C and 45°C). As soon as it falls within the correct temperature range, the charging process will automatically begin.



If the red indicator light (3) is "BLINKING", the contacts on the charger or battery are contaminated, the battery is defective, or the battery is not compatible with the charger. Clean the contacts or replace the battery.



2. Once the battery is fully charged, remove the battery from the charger.
3. Unplug the mains plug of the charger from the socket.



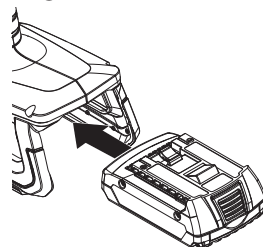
The W250 vibrates when the battery needs to be recharged.

8. Start-up

- Unscrew the container from the spray gun.
 - Aligning suction tube. (Fig. 2)
- If the suction tube is positioned correctly, the container contents can be sprayed without almost any residue.
- When working on lying objects: Turn the suction tube forwards. (Fig. 2 A)
- Spraying work when working on overhead objects: Turn the suction tube rearwards. (Fig. 2 B)
- Set the container on a sheet of paper, pour in the prepared coating material and screw the container tightly onto the spray gun.
 - Connect the front part with the rear part of the gun (Fig. 3).
 - Insert battery.



Check that the battery is securely and firmly inserted. A battery that becomes detached during operation can cause damage to property or personal injury.



Always switch the W 250 on first before pulling the trigger. Otherwise, the material may drip from the nozzle.

- Switch the unit on using the ON/OFF switch (Pos. I).
- Pull the trigger.
- Adjust the spray setting on the spray gun.

9. Adjusting the desired Spray Setting

Three different spray jet settings can be chosen on the spray gun, depending on the application and target object.



WARNING! Danger of injury! Never pull the trigger guard while adjusting the air cap.

With the union nut (fig. 5, 1) slightly unscrewed, turn the air cap (2) to the desired spray setting position (arrow). Then tighten the union nut.

Fig. 4 A = vertical flat jet → for horizontal surfaces

Fig. 4 B = horizontal flat jet → for vertical surfaces

Fig. 4 C = circular jet → for corners, edges and hard-to-reach surfaces

10. Adjusting the Material Volume (Fig. 6)

Set the material volume by turning the regulator on the trigger guard of the spray gun.

- turn to the left → lower material volume
- + turn to the right → higher material volume

11. Spray Technique

- The spray result depends heavily on the smoothness and cleanliness of the surface to be sprayed. Therefore the surface should be carefully prepared and kept free of dust.
- Cover all surfaces not to be sprayed.
- Cover screw threads or similar parts of the target object.
- It is advisable to test the spray gun on cardboard or a similar surface to find the correct setting.

Important: Begin spraying outside of the target area and avoid interruptions inside the target area.

- **Correct (Fig. 7a)** Be sure to hold the spray gun at an even distance of approx. 5 - 15 cm to the target object.
- **Incorrect (Fig. 7b)** Heavy spray fog build-up, uneven surface quality.
- Move the spray gun evenly cross-wise or up-and-down, depending on the spray pattern setting.
- An even movement of the spray gun results in an even surface quality.
- Wipe off the nozzle and air cap regularly to make sure they do not get blocked. (Fig. 8)

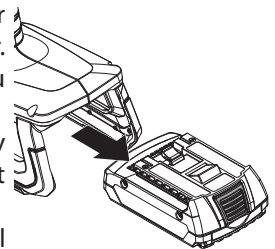
12. Interruption of Work

- During longer breaks, vent the container by briefly opening and then closing it again.
- Clean nozzle openings after an interruption in operation.

13. Taking Out of Operation and Cleaning

Proper cleaning is the prerequisite for problem-free operation of the paint application device. No warranty claims are accepted in case of improper or no cleaning.

- 1) Switch the unit off using the ON/OFF switch (Pos. 0). Vent the container in case of longer breaks and after the work has been terminated. This can be done by briefly turning open and then closing the container or by pulling the trigger guard and letting the paint into the original paint container.
- 2) Press the battery lock (11) and remove the battery when you have finished your work.
- 3) Divide the spray gun. Press the hook (Fig. 3 "click") slightly downwards. Turn the gun front part and gun rear part against each other and take them apart.
- 4) Unscrew the container. Empty any remaining coating material



back into the material tin.

- 5) Pull out the suction tube with container seal.
- 6) Preclean the container and suction tube with a brush. Clean the ventilating bore (Fig. 9, C).

CAUTION! Never clean seals, diaphragm and nozzle or air holes of the spray gun with metal objects.

The ventilation hose and diaphragm are only solvent-resistant to a limited extent. Do not immerse in solvent, only wipe.

- 7) Unscrew the union nut (Fig. 9, 1) and remove the air cap (2) and nozzle (3). Clean the air cap, nozzle seal (4) and nozzle with a brush and solvent or water.
- 8) **The unit may only be operated with an integer diaphragm (Fig. 10, 15).** If any paint has penetrated to the ventilation hose, check and clean the membrane (see the Maintenance chapter).



WARNING! Never hold the spray gun rear part under water or immerse it into liquids. Clean the housing only with a moistened cloth.

- 9) Clean the outside of the spray gun and container with a cloth soaked in solvent or water.
- 10) Assemble the parts again (see "Assembly").

Assembly



Attention! Never operate the device if the nozzle seal is either damaged or missing. If the nozzle seal is either missing or damaged liquids can enter the device and increase the risk of an electric shock.

- 1) Push the nozzle seal (fig. 11, 4) over the needle (18); the groove (slot) should point towards you.
- 2) Put the nozzle (fig. 11, 3) onto the gun body and find the correct position by turning it.
- 3) Put the air cap onto the nozzle and tighten it using the union nut.
- 4) Place the container seal from below on the suction tube and slide it over the collar, while turning the container seal slightly.
- 5) Insert the suction tube with container seal in the gun body.



In order to mount the gun more easily apply lubricating grease (enclosed) liberally to the O-ring at the gun front part. (Fig. 13, Item 6)

14. Maintenance

Air filter



WARNING! Never operate the machine without the air filter; dirt could be sucked in and interfere with the function of the machine. Remove battery.

- Press both locks (Fig. 12.1) and remove the filter cover.
- Remove the air filter (2) and replace depending on contamination.
- Click the filter cover in place again.

Ventilating hose/Valve

- Pull the ventilating hose (Fig. 10, 13) at the top from the gun body. Screw off the valve cover (14). Remove the diaphragm (15). Carefully clean all parts or replace in the event of damage.
- Place the diaphragm (Fig. 10, 15) **with the pin facing upwards** on the bottom section of the valve. Also see the marking on the gun body.
- Place on the valve cover (Fig. 10, 14) and screw it closed.
- Place the ventilating hose (Fig. 10, 13) on the valve cover and on the nipple at the gun body.

15. Spare Parts List

Spare Parts List (Fig. 13)		
Pos.	Designation	Order No.
1	Standard spray attachment complete incl. 800 ml container	2361731
2	Union nut	2362873
3	Air cap	2361747
4	Nozzle	2362878
5	Nozzle seal	0417706
6	O-ring	2362875
7	Material volume regulation with spring, complete	0417910
8	Ventilating hose, valve cover, diaphragm	2304027
9	Container seal	2370 527
10	Suction tube	2367 410
11	Container with cover 800 ml	0413 909
12	Air filter	2470181
13	Air filter cover	2470182
14	Rechargeable battery (Li-Ion, GBA 18 V, 2.0Ah)	2432720
15	Stir stick	2304419
16	Charger AUS (GAL 18V-40)	2433983
17	Lubricating grease (no fig.)	2315539

16. Accessories

The **CLICK&PAINT SYSTEM** with additional spray attachments and accessories offers the right tool for each work.



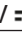

We recommend against using the W 250 with the Wall Extra I-Spray spray attachment.

Further information about the WAGNER range of products for renovating is available under wagneraustralia.com.au

17. Correction of Malfunctions

Problem	Cause	Remedy
No coating material emerges from the nozzle	<ul style="list-style-type: none"> • Device not switched on (trigger cannot be pulled) • Battery flat, faulty or incompatible • Nozzle clogged • Feed tube clogged • Material volume setting turned too far to the left (-) 	<ul style="list-style-type: none"> • Press the ON/OFF switch on the side of the device • Charge or replace • Clean • Clean • Turn to the right (+)
No coating material emerges from the nozzle	<ul style="list-style-type: none"> • Feed tube loose • No pressure build-up in container 	<ul style="list-style-type: none"> • Insert • Tighten container
Coating material drips from the nozzle	<ul style="list-style-type: none"> • Nozzle loose • Nozzle worn • Nozzle seal is missing or worn • Coating material assembly at air cap, nozzle or needle 	<ul style="list-style-type: none"> • Tighten • Change • Insert an intact nozzle seal • Clean
Atomisation too coarse	<ul style="list-style-type: none"> • Viscosity of coating material too high • Material volume too large Material volume adjusting screw turned too far to the right (+) • Nozzle contaminated • Air filter heavily soiled • Too little pressure build-up in container 	<ul style="list-style-type: none"> • Thin • Turn material volume adjusting screw to the left (-) • Clean • Change • Tighten container
Spray jet pulsates	<ul style="list-style-type: none"> • Coating material in container running out • Air filter heavily soiled • Nozzle seal is missing or worn 	<ul style="list-style-type: none"> • Refill • Change • Insert an intact nozzle seal
Coating material causes "paint tears"	<ul style="list-style-type: none"> • Too much coating material applied. 	<ul style="list-style-type: none"> • Turn material volume adjusting screw to the left (-)
Too much fog of coating material (Overspray)	<ul style="list-style-type: none"> • Distance to the object too large • Too much coating material applied 	<ul style="list-style-type: none"> • Reduce distance • Turn material volume adjusting screw to the left (-)
Paint in the ventilating hose	<ul style="list-style-type: none"> • Diaphragm soiled • Diaphragm defective 	<ul style="list-style-type: none"> • Clean the diaphragm • Replace the diaphragm

18. Technical Data

Technical Data*	
Max. viscosity	60 DIN-s
Power source	230 V~, 50 Hz
Rechargeable battery (GBA 18 V, 2.0 Ah):	Li-Ion, 18 V  , 2.0 Ah
Max. flow rate:	250 ml/min
Charger (GAL 18V-40):	
Input voltage	220-240 V~, 50-60 Hz;
Output voltage	10.8-18 V
Charging current	4000 mA
Protection Class (charger):	 / II
Charging time:	approx. 24 min (80%), 35 min (100%)
Size of project:	
Varnishes	approx. 18 m fence
Paint	approx. 8 doors
Sound pressure level**	79 dB (A); Uncertainty K = 3 dB
Sound power level**	87 dB (A); Uncertainty K = 3 dB
Oscillation level**	< 2.5 m/s ² ; Uncertainty K = 1.5 m/s ²
Weight (without battery):	0.75 kg
Rechargeable battery	0.35 kg
Total	approx. 1.2 kg

* When using a GBA 18 V, 2.0 Ah battery and a charger GAL 18V-40

** Measured in accordance with EN 62841-1

Information about the oscillation level

The specified oscillation level has been measured according to a standard test procedure and can be used to compare against electric tools.

The oscillation level is also for determining an initial assessment of the vibrational strain.

Attention! The vibration emission value can differ from the specified value when the electric tool is actually in use, depending on how the electric tool is being used. It is necessary to specify safety measures to protect the operating personnel. These measures are based on an estimated shutdown during the actual conditions of use (all parts of the operating cycle are taken into consideration here, for example periods when the electric tool is switched off, and, when it is switched on but running without any load).

19. Environmental protection



At the end of its service life, the appliance, including accessories and packaging, must be recycled in an environmentally friendly manner. Separate packaging materials by type and put them in the recyclables collection. Old appliances and rechargeable batteries/batteries must not be disposed of with household waste. Help protect the environment by taking the appliance and the battery to a local disposal point, contact our customer service team or make enquiries at a specialist shop.

20. Important Note regarding Product Liability!

According to an EU directive, the manufacturer is only liable without limitation for faults in the product if all parts come from the manufacturer or have been approved by the manufacturer and have been mounted to the device and are operated properly. If third-party accessories or spare parts are used, the manufacturer is exonerated wholly or partly from his/her liability if use of the third-party accessories or spare parts have caused a defect in the product.

EU Declaration of conformity

We declare under sole responsibility that this product conforms to the following relevant stipulations:

2006/42/EC, 2014/30/EU, 2014/35/EU, 2011/65/EU, 2012/19/EU

Applied harmonised norms:

EN 62841-1, EN 50580, EN 62133-2, EN 60335-1, EN 60335-2, EN IEC 55014-1,

EN IEC 55014, EN IEC 61000-3-2, EN 61000-3-3

The EU declaration of conformity is enclosed with the product.

If required, it can be re-ordered using order number **2458373**.



**WAGNER SPRAYTECH
AUSTRALIA PTY. LTD.,**

8 – 10 Dansu Court
Hallam, Victoria, 3803
T +61 3 9587 2000
F +61 3 9580 9120



Not responsible for errors and changes.

Part. No. 2459241 D

12/2024_RS

© Copyright by J. Wagner GmbH