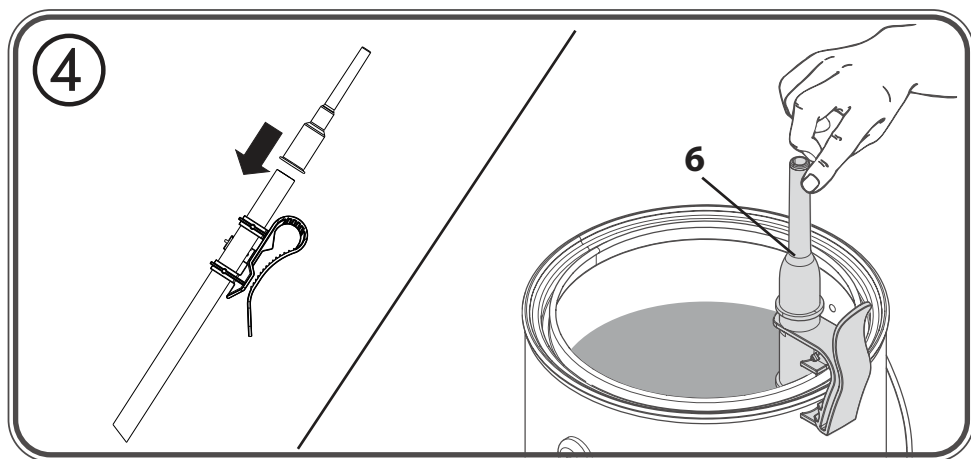
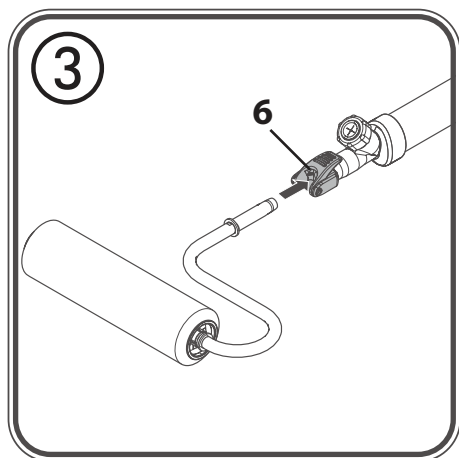
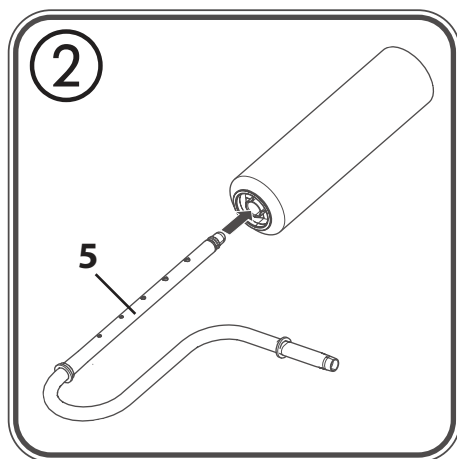
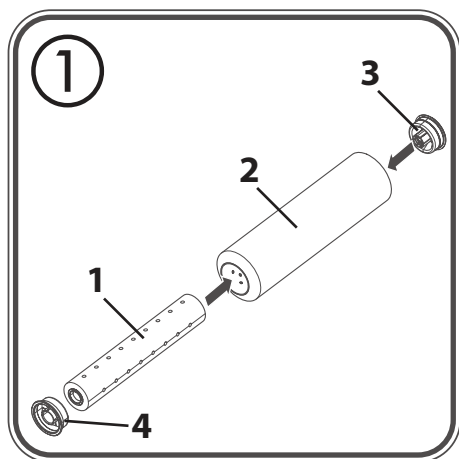
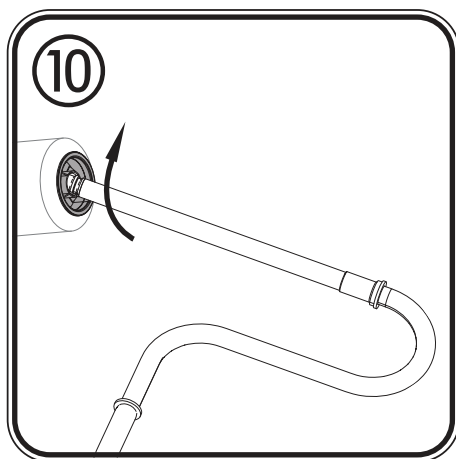
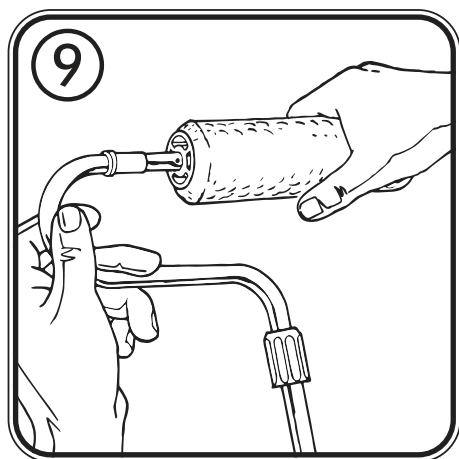
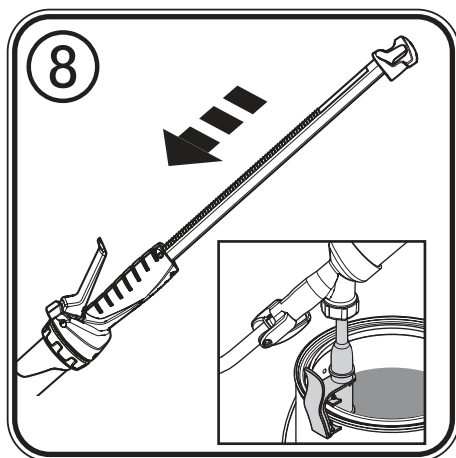
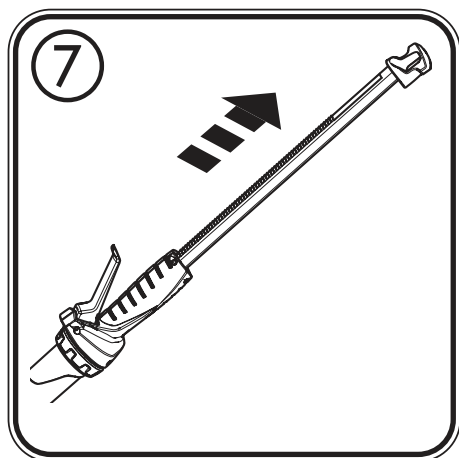
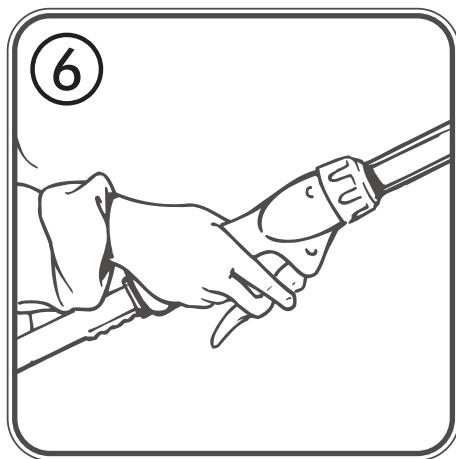
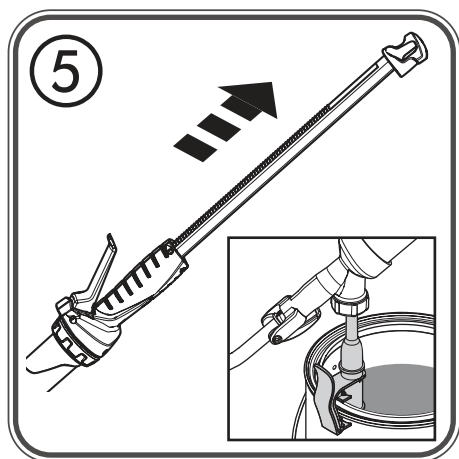


EASYROLL

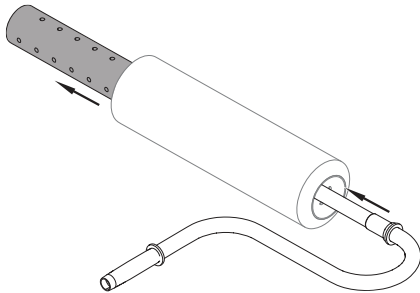
ORIGINAL- BETRIEBSANLEITUNG



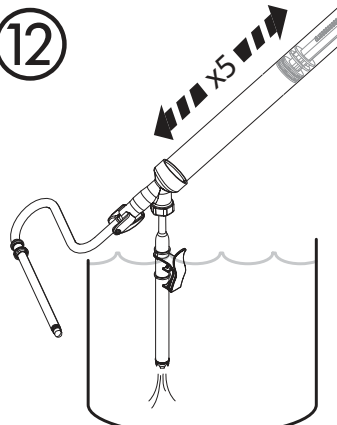




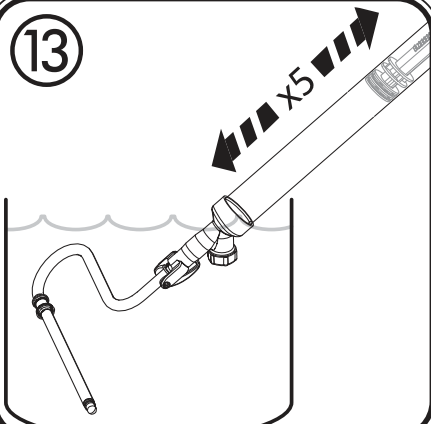
11



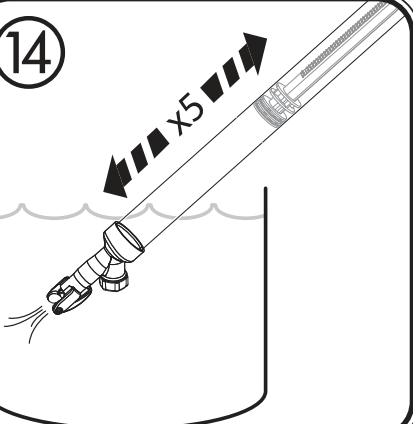
12



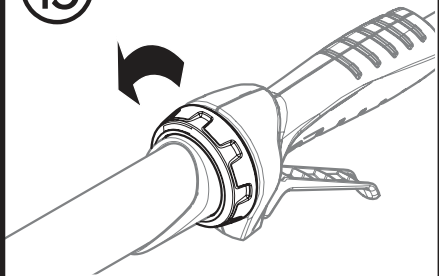
13



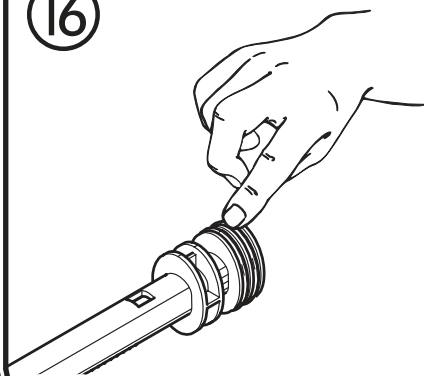
14



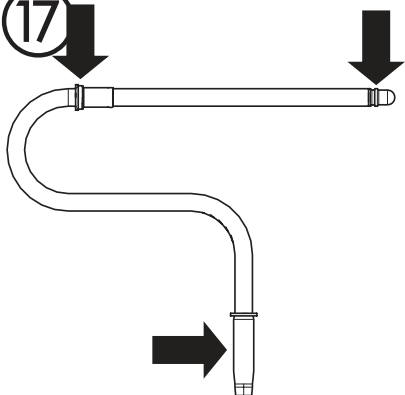
15



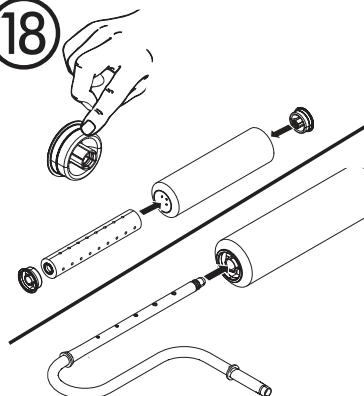
16



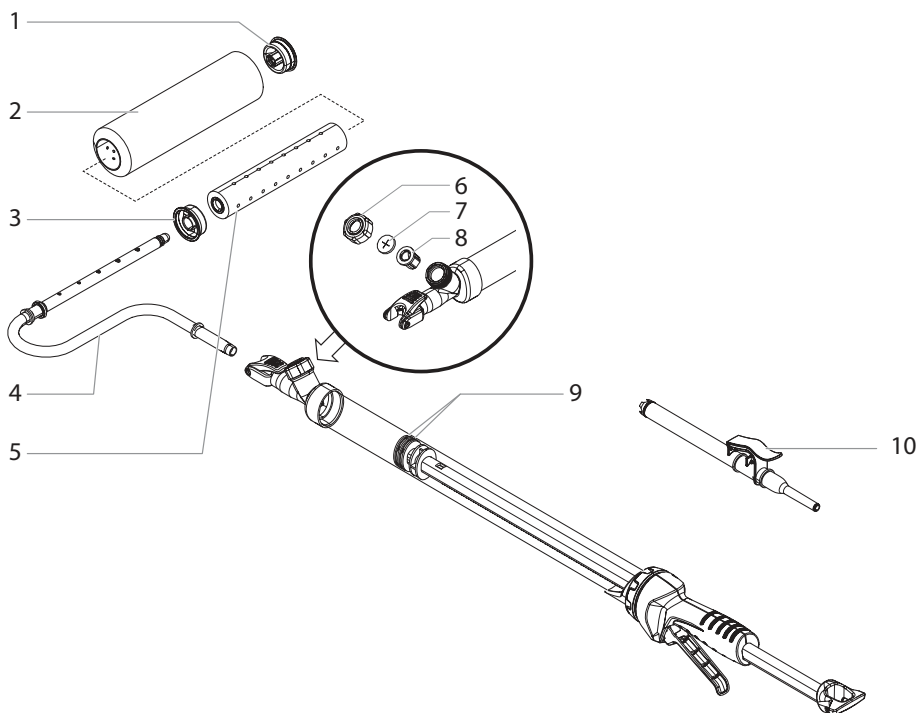
17



18



19



BEFORE YOU BEGIN

CAUTION: You should only use the EasyRoll for diluted liquids and dilutable paints, such as water soluble, latex and acrylic paints, as not all components are solvent resistant. To ensure as long a useful life as possible of your EasyRoll, it should be thoroughly cleaned immediately after each use.

PREPARING THE WORKPLACE AND THE PAINT

- Before beginning work, cover or tape up the floor, furniture, door frames and other objects.
- Place the unit on a sufficiently sized piece of plastic or cardboard.
- Stir the paint well and thin up to 10 % if necessary (observe information from manufacturer).

START-UP



Depending on the version, EasyRoll comes already pre-assembled. If it is not, please follow the steps below.

1. Place the inner roll (Fig. 1, 1) in the roller cover (2) and close the roller cover with the two caps (3 and 4).
2. Push the roller handle (Fig. 2, 5) into the roller cover until it audibly engages.
3. Open the lever (Fig. 3, 6) and place the roller handle in the holder.
4. Secure the fill tube (Fig. 4) on the edge of the paint bucket and push the fill tube all the way to the floor of the container.
5. Apply a little lubricating grease to the fill tube so that it can be inserted more easily into the fill valve. (Fig. 4, 7)
6. Press down and firmly hold the fill valve of the main tube onto the fill tube. Pull the plunger to draw the paint into the main tube. (Fig. 5)
7. Push plunger tube forward until you see paint coming through the roller cover.
8. Begin rolling. Squeeze trigger for additional paint as needed.

Do not oversaturate the roller. Refill EasyRoll as necessary to complete project. During extended break periods, wrap your roller cover in a plastic bag to keep it from drying out.

CLEANUP

When cleaning the EasyRoll, it is very important that you use the appropriate cleaning solution for the type of paint you are using.

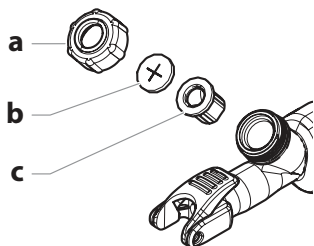
1. Pull plunger back to draw remaining paint from roller arm into the tube.(Fig. 5)
2. Press fill valve onto fill tube. (Fig. 8) Push plunger forward to return excess paint to can.
3. Pull the colour roller off the roller handle. (Fig. 9). If necessary, tap lightly on the edge of the colour roller to release it. Take care not to knock the inner cap since doing so could cause damage.

4. Lever the two caps out of the roller cover using the roller handle. (Fig. 10).
5. Push the inner roller out of the roller cover. (Fig. 11).
6. Clean the roller cover, inner roller and caps with water.
7. Clean the fill tube, roller arm and fill valve in sequence by immersing the components in a bucket of water and moving the piston rod back and forth around 5 times. (Fig. 12, 13 and 14)

STORAGE

1. Turn the locking collar next to the trigger counterclockwise (fig. 15) until the main tube slides off the plunger.
2. Pack a generous amount of petroleum jelly around and in between the O-rings on the plunger. (Fig. 16)
3. Clean and pack a generous amount of petroleum jelly on the indicated bearing areas of the arm. (Fig. 17)
4. Grease the two caps and put the roller cover and roller arm back together. (Fig. 18)

PROBLEM	CAUSE	SOLUTION
A. There is paint leakage on the roller arm assembly	1) The seal on the arm is backward 2) Parts or connecting points of the roller not properly cleaned 3) Paint residue on connecting areas 4) The roller cover is worn or damaged 5) The inner roller or sealing cap is worn or damaged 6) The bearing areas are worn	1) Turn the seal around 2) Clean and properly lubricate (see "Cleanup" and "Storage" sections) 3) Clean connecting areas 4) Replace roller cover 5) Replace the inner roller or sealing cap 6) Call customer service
B. Plunger is difficult to pull/push	1) O-rings are not lubricated	1) Lubricate the O-rings on the plunger
C. The fill tube will not fill with paint or paint leaks from fill valve	1) Paint residue on fill valve components	1) Insert fill tube firmly into fill valve and twist fill tube several times to break up paint residue. 2) If the problem persists, refer to the steps below to clean the fill valve components.

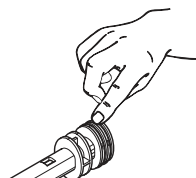


- 1) Unscrew the locking cap (a) on the valve housing by turning counterclockwise.
- 2) Remove the retaining disk (b) and the duckbill valve (c) from the valve housing
- 3) Clean these parts thoroughly using water.
- 4) Allow all parts to dry before reassembling.
- 5) Grease the tip of the rubber valve (c) with Vaseline.
- 6) Replace the duckbill valve (c) and retainer disk (b).
- 7) Screw the locking cap (a) on the valve housing by turning it counterclockwise.

Parts List (Fig. 19)

Item	Description	Part No.	Qty.
1,3,5	Roller core and cap	2422071	1
2	Roller cover 12 mm	0998230	1
	Roller cover 20 mm (accessories)	0245717	1
4	Roller arm	2422073	1
6,7,8	Locking cap, retainer disk, duckbill valve	2325721	1
9	O-ring	2326966	2
10	Suction system	2423178	1

NOTICE: If after extended use you find the plunger difficult to pull while filling, apply a generous amount of petroleum jelly around the o-rings located at the end of the plunger. We have included a packet of petroleum jelly for your convenience.



Important Note regarding Product Liability!

Due to an EC ordinance in effect since 01.01.1990, the manufacturer is liable for his product only if all parts originate from or were approved by the manufacturer and the devices are assembled and operated correctly. The use of other accessories and spare parts can partially or completely invalidate the liability.

3+1 years guarantee

J. Wagner GmbH, based in 88677 Markdorf, hereby guarantees the purchaser an extension to the statutory warranty for this product of a period of 36 months. This warranty is extended by a further 12 months if the product is registered within 4 weeks of the purchase on the Internet at www.wagner-group.com/3plus1. The start of the warranty and registration period is the date of purchase (original receipt). The warranty includes the free repair of defects which are demonstrably caused by the use of unsuitable materials in the product's manufacture or by assembly errors, as well as the free replacement of faulty components. If a problem occurs with the product during the specified period, you can return or bring the product back to us. We expressly reserve the right to provide the warranty. The warranty does not cover components subject to wear, improper use or commissioning or assembly or repairs carried out by the user. The warranty does not cover commercial use of the product. Transport damage, maintenance work and damage or defects cause by inadequate maintenance work are not covered by the warranty. Your statutory material defect rights, to which you are entitled for a period of two years from the handover of the purchased item, are not restricted by the above warranty. **The warranty, along with your statutory warranty rights, will expire if the device has been opened by persons other than WAGNER service personnel.**

Proof of purchase of the device must be provided when making a claim under the warranty by presenting the original receipt. For warranty claims, please contact Wagner Customer Services. If you are sending the product to us, please package it so that no further damage is sustained in transit. The relevant address for your country is shown on the last page.

Please note: Registration is only possible if the purchaser agrees to the storage of the data that has to be entered during the registration process. To the extent permitted by law, we exclude all liability for personal injury, property damage or consequential damage, in particular if the device has been used for purposes other than those specified in the operating instructions, has not been commissioned or repaired in accordance with our operating instructions or repairs have been carried out independently by a non-expert.