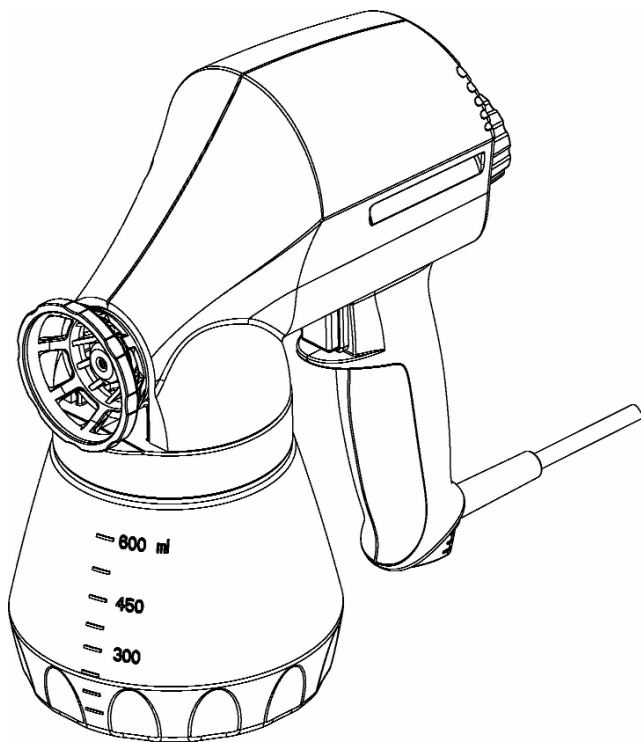


WAGNER

2 JAHRE
GARANTIE

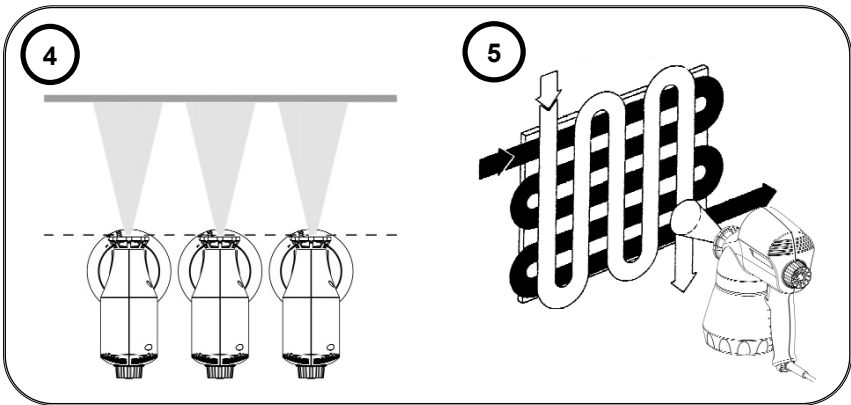
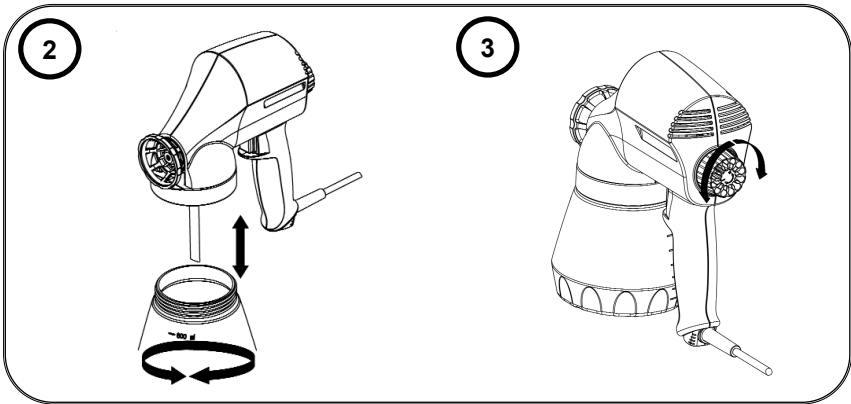
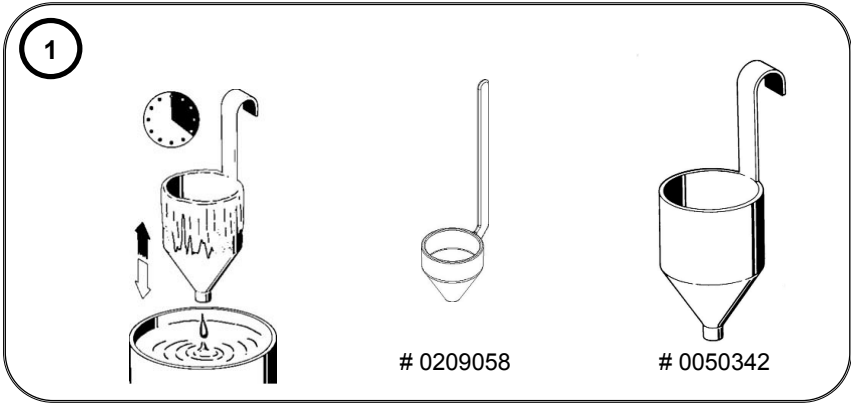
2 YEARS
GUARANTEE

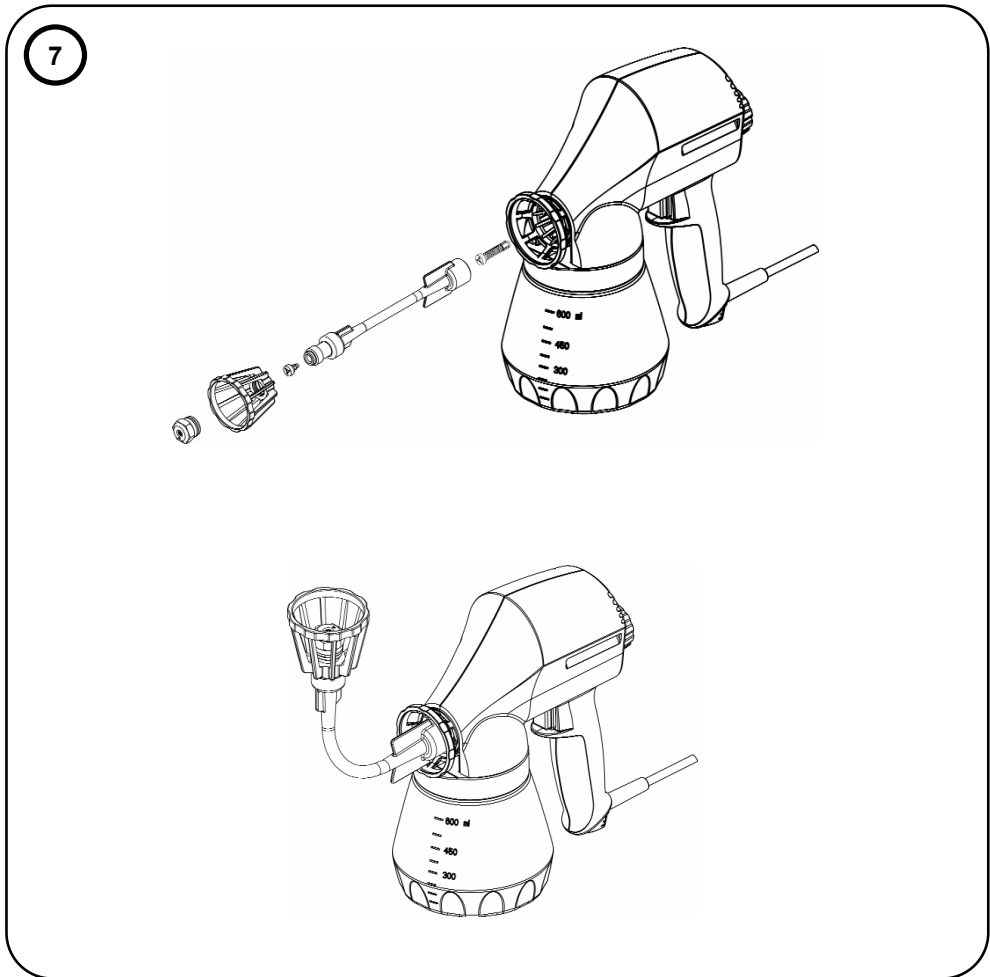
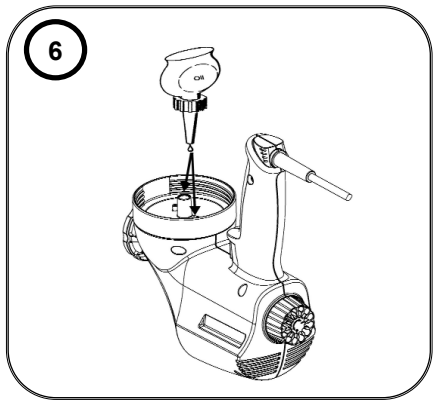
2 ANS DE
GARANTIE



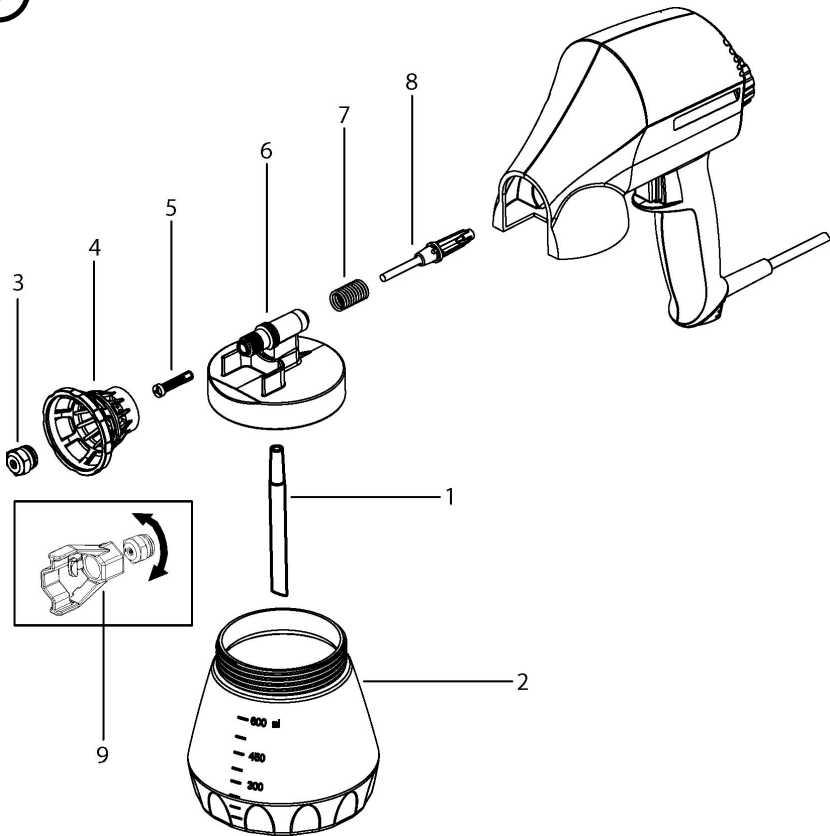
W 95
D/GB/F/NL







8



Read the operating instructions carefully before using the tool and observe the safety instructions. Keep the operating instructions in a safe place.

General Safety Instructions

Caution!



Read all the instructions. *Non-observance of the instructions below can cause electric shock, fire and or serious personal injuries. The term "power tool" used below covers both mains-operated power tools (with mains lead) and accumulator-operated power tools (without mains lead).*

KEEP THESE INSTRUCTIONS IN A SAFE PLACE:

1. Workplace

- a) **Keep your workplace clean and tidy.** *Untidiness and unlit working areas can lead to accidents.*
- b) **Never use the tool in hazardous areas that contain flammable liquids, gases or dusts.** *Power tools generate sparks that can ignite the dust or vapors.*
- c) **Keep children and other persons away when using the power tool.** *You can lose control of the tool if you are distracted.*

2. Electrical Safety

- a) **The tool plug must fit into the socket. The plug may not be modified in any form. Do not use adaptor plugs together with protective-earthed tools.** *Unmodified plugs and suitable sockets reduce the risk of an electric shock.*
- b) **Avoid physical contact with earthed surfaces such as pipes, heating elements, stoves and refrigerators.** *The risk through electric shock increases if your body is earthed.*
- c) **Keep the equipment away from rain and moisture.** *The risk of an electric shock increases if water penetrates electrical equipment.*
- d) **Do not misuse the mains lead by carrying the tool by the lead, hanging it from the lead or by pulling on the lead to remove the plug. Keep the lead away from heat, oil, sharp edges or moving tool parts.** *Damaged or twisted leads increase the risk of an electric shock.*

- e) **If you work outdoors, use only extension leads that are approved for outdoor use.** *The use of an extension lead that is suitable for outdoors reduces the risk of an electric shock.*

3. Safety of Persons

- a) **Be attentive. Pay attention to what you are doing and work sensibly with a power tool. Do not use the tool if you are tired or under the influence of drugs, alcohol or medication.** *Just a moment of inattentiveness while using the tool can lead to serious injuries.*
- b) **Wear personal safety equipment and always wear safety goggles** *Wearing personal protective equipment, such as dust mask, non-slip safety shoes, safety helm or ear protection, depending on the type of power tools, reduces the risk of injury.*
- c) **Avoid accidental starting-up. Ensure that the switch is in the "OFF" position before inserting the plug into the socket.** *Accidents can occur if you carry the power tool while your finger is on the switch or if you connect the power tool to the power supply which it is on.*
- d) **Remove setting tools or wrenches before switching on the power tool.** *A tool or wrench that is in a rotating tool part can lead to injuries.*
- e) **Do not overestimate your abilities. Ensure that you are standing securely and have your balance at all times.** *This ensures that you can control the tool better in unexpected situations.*
- f) **Wear suitable clothing. Do not wear wide clothing or jewelry. Keep your hair, clothes and gloves away from moving parts.** *Loose clothing, jewelry or long hair can be caught in moving parts.*
- g) **If dust extraction or collection devices can be mounted, ensure that these are connected and are being used properly.** *Using these devices reduces the danger caused by dust.*

4. Careful Handling and Use of Power Tools

- a) **Do not overload the tool. Use the power tool designed for the work that you are doing.** *You work better and safer in the specified performance range if you use the suitable power tool.*
- b) **Do not use power tools whose switch is defective.** *A power tool that cannot be switched on or off is dangerous and has to be repaired.*

- c) **Remove the plug from the socket before carrying out tool settings, changing accessories or putting the tool away.** *This precautionary measure prevents unintentional starting of the tool.*
- d) **Store unused power tools so that they are inaccessible to children. Do not let persons use the tool who are not familiar with it or who have not read these instructions.** *Power tools are dangerous when they are used by inexperienced persons.*
- e) **Take proper care of your tools. Check whether the moving parts function trouble-free and do not jam, whether parts are broken or damaged so that the tool function is impaired. Have damaged parts repaired before using the tool.** *Many accidents have their origin in power tools that have been maintained badly.*
- f) **Use the power tool, accessories, insert tools, etc. in accordance with these instructions and in a fashion specified for this special tool type. Take the working conditions and the activity to be carried out into consideration.** *The use of power tools for purposes other than the intended ones can lead to dangerous situations.*

5. Service

- a) **Have your tool repaired only by qualified specialist personnel and only with original spare parts.** *This ensures that the tool safety is maintained.*

Safety Instructions for Spray Guns

- Spray materials emerge from nozzle tips under high pressure.



Attention! Danger of injection - Never point the spray stream towards human beings or animals.

- The spray gun is to be used only for paints and solvents with a 21° C (32° in UK) flashpoint or higher (See information on the material tin. Hazard class A II and A III permitted).
- The spray gun is not to be used in work places covered by Ex-protection regulations.
- To avoid the hazard of explosion when spraying, provide for effective natural or artificial ventilation.
- No sources of ignition are to be in the immediate area when spraying, e.g. open flame, cigarettes, sparks, glowing wires and hot surfaces.
- Before carrying out any work on the spray gun, unplug the lead from the power socket.
- Do not use spray guns to spray flammable liquids.

- The spray guns are not to be cleaned with flammable solvents which have a flashpoint under 21°C.
- Take precautionary measures against potential hazards from the spray liquid and follow any instructions given on containers or laid down by the manufacturer of the liquid.
- Do not spray any liquid of unknown hazard potential.
- Wear a breathing mask and ear protection.

Technical Data W 95

Max. delivery rate	140 g/min	Container capacity:	600 ml
Max. viscosity	(runout time) 60 sec.	Double insulation:	<input type="checkbox"/>
		Pump:	Replaceable
Max. pressure spikes:	120 bar	Pump cylinder:	Special steel
Power source:	230 V, 50 Hz	Piston:	Special steel Ø 5 mm
Power consumption:	70 W	Oscillation level:	10,5 m/s ²
Round spray nozzle:	0,8 mm	Sound pressure level:	86 dB(A)
Weight:	1,5 kg	Sound pressure output:	99 dB(A)

Materials to be used:

Paints and varnishes containing solvents, acrylic enamel paints, water-soluble varnishes, glazes, polishes, wood preservatives, disinfectants, plant protectives, saturants, as well as oils and other watery liquids.

The following spray substances are not suitable for use:



Dispersion and latex paints, materials containing strong abrasives, glazes with coarse particles, strippers and caustic solutions, silicate paints.

Use of these spray materials can lead to increased wear or corrosion damage in the pump area, which are not covered by the WAGNER-Guarantee.

Preparing the Spray Material

The paints usually need to be diluted for use with the spray gun. You will find guidelines for sprayable dilutions in the following viscosity table (viscosity = consistency of the paint). You can achieve the correct dilution by using the viscosity test cup.

Handling Table for Viscosity

Spray Material	Viscosity: (Runout time in seconds)	
		
Thinner-soluble varnishes/ primers	20-35	20-45
Water-soluble varnishes / primers	20-50	20-60
Automobile spray paint	18-22	18-22
Wood preservatives, disinfectants, plant protectants, polishes, strippers, oils	undiluted	
Hammer effect enamel	25-35	30-45
Aluminium paints	20-30	20-30

Measuring the Viscosity

Dip the viscosity test cup (Illus. 1) completely into the spray material. Hold the test cup up and measure the time (in seconds) until the liquid empties out. Compare the measured "runout time" with the Viscosity Table.

Start-up

1. Before connecting to the mains supply, please be sure that the supply voltage is identical with the value given on the rating plate (on the side of the spray gun).
2. Dilute the spray material according to the above table.
3. Place the container on a sheet of paper and fill it with the prepared spray material.



Attention! Do not operate the spray gun without spray material in the container.

4. Position the spray gun on the container and turn the container to the right until the container fits tightly (Illus. 2, arrow).
5. Activate the switch to start up the spray gun.
6. By turning the fine adjustment button you can vary the spray amount (Illus.3, arrow).

Spray Technique

- Cover areas that are **not** to be sprayed. When working keep in mind that wind, for example, may transport paint mist over great distances and cause damage.
- Do not spray the vessel empty. The suction tube should always be immersed in liquid. If air is sucked in, larger drops may result.
- Test the spray gun on cardboard or a similar surface to find the correct setting.
- When spraying, hold the spray gun in a horizontal position. Use the **flexible nozzle extension** (Illus. 7, arrow, special accessories) for spraying upwards (e.g. a ceiling) or downwards (e.g. an unhinged door laid on the floor).

- The spray movement should come from the arm, not just from the wrist. This ensures that a uniform distance is maintained between the spray gun and the spray surface during the spray operation (Illus. 4).
- To achieve optimal spray results, spray back and forth over the surface (Illus. 5).

Cleaning and Maintenance



The spray gun can only operate satisfactorily if it is cleaned and preserved after each use.

Attention! Never immerse the spray gun in liquid when cleaning.

- 1 Empty out the remaining paint from the container.
- 2 Put proper thinner in the container and trigger the sprayer for approx. 2 seconds.
- 3 Pull the main plug out of the socket.
- 4 Disassemble the spray gun as shown in Illus. 8 (spare parts).
- 5 Thoroughly clean all soiled parts.
- 6 Reassemble the parts in reverse order.
- 7 Put a few drops of oil (e.g. sewing machine oil) in the intake and runback holes (Illus. 6, arrow). Briefly switch on the spray gun.

Accessories W 95 (not included in scope of delivery)

Designation	Order No.
Round spray nozzles for various spray materials: Very thin spray materials/nozzle size: 0,5	0046 894
Paint container with cover	0414 906
Flexible nozzle extension with atomiser	0046 675

Flexible Nozzle Extension (Illus. 7)

For spraying ceilings, resting objects or hard-to-reach areas e.g. radiators

Spare Parts List W 95

Pos	Name	Order No.
1	Suction tube	0413 305
2	Paint container with cover	0414 906
3	Nozzle 0,8 mm	0046 903
4	Locking nut	0413 310
5	Valve	0209 042
6	Pump housing	0500 255
7	Piston spring	0033 028
8	Piston	0198 207
9	Nozzle spanner	0199 327
10	Viscosity measuring cup	0209 058

Malfunction	Cause	Correction
Spray gun buzzes and does not work	Piston stuck	Disassemble pump and clean with thinner
	Defective drive	Send spray gun to customer service center
Spray gun does not suck in	No valve in the pump	Insert valve
Spray gun sucks in but does not spray	Nozzle clogged	Clean
	Ducts and holes in atomiser clogged	Clean
Spray gun works but sprays unevenly	Spray material in container running out	Refill
	Spray gun held inclined leading to sucking in of air	Use flexible nozzle extension (see accessories)
	Viscosity of spray material too high (too thick)	Dilute accordingly
	Fine adjustment button not set correctly	Reset according to spray material
	Nozzle worn out	Replace
	Valve worn out	Replace
	Wrong valve inserted	Use correct valve

Environmental protection



The appliance and accessories should be recycled in an environmentally friendly way. Do not dispose of the appliance with household waste. Support environmental protection by taking the appliance to a local collection point or obtain information from a specialist retailer.

Important Note Regarding Product Liability!

Using other accessories and spare parts can lead to partial or total loss of liability and guarantee claims. With original WAGNER accessories and spare parts, you have the guarantee that all safety regulations are fulfilled.

2 - Year Guarantee

The warrantee is valid for two years, starting on the day of sale (receipt). It includes and is limited to elimination of the defect, proven to have been caused by inferior production materials or mistakes during assembly, free of charge or replacement of the defective parts. Use, start-up or do-it-yourself assembly or repairs which are not listed in our operating instructions are not covered by the warrantee. Parts subject to wear are also excluded from the warrantee. The warrantee does not cover commercial use. We reserve the exclusive right to make judgements on warrantee obligations. The warrantee is void if the unit was opened by persons other than WAGNER Service personnel. Transport-related damage, maintenance work and damage and malfunctions caused by improper maintenance work are not covered by the warrantee. For implementation of the guarantee, proof of purchase of the unit must be provided, i.e. submitting the original receipt. To the fullest legal extent possible, we are not liable for any personal, material or consequential damages, especially those resulting from use of the unit other than as intended in the operating instructions, start-up or repair in a manner other than described in our operating instructions or repairs performed by a non-professional. Repairs going above and beyond those dealt with in these operating instructions are reserved for our factory.

In case of guarantee or repair, please refer to your point of sale.

Warning

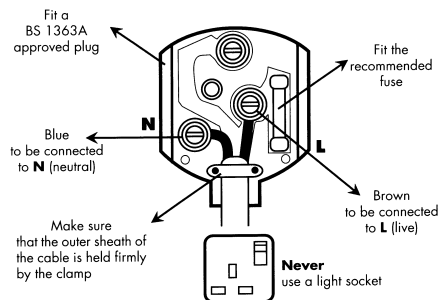
If the supply cord of this appliance is damaged, it must only be replaced by a repair shop appointed by the manufacturer, because special purpose tools are required.

Warning: Do not connect the blue or brown wire to the earth terminal of the plug! The wires in this mains lead are coloured in accordance with the following code:

blue = neutral **brown** = live

As the colours of the wires in the mains lead of this appliance may not correspond with the coloured markings identifying the terminals in your plug, proceed as follows:

- ◆ Should the moulded plug have to be replaced, never re-use the defective plug or attempt to plug it into a different 13 A socket. This could result in an electric shock.
- ◆ Should it be necessary to exchange the fuse in the plug only use fuses approved by ASTA in accordance with BS 1362. 5 Amp fuses may be used.
- ◆ To ensure that the fuse and fuse carrier are correctly mounted please observe the provided markings or colour coding in the plug.
- ◆ After changing the fuse, always make sure that the fuse carrier is correctly inserted. Without the fuse carrier, it is not permissible to use the plug.
- ◆ The correct fuses and fuse carriers are available from your local electrical supplies stockist.



**CE Konformitätserklärung**

Wir erklären in alleiniger Verantwortung, dass dieses Produkt den folgenden einschlägigen Bestimmungen entspricht: 73/23/EWG, 89/336 EWG; 2002/95/EG; 2002/96/EG.

Angewandte harmonisierte Normen: EN 60745-1:2003; EN 50144-2-7:2000; EN 55014-1:2002; EN 55014-2:2001; EN 61000-3-2:2005; EN 61000-3-3:2001

**CE Declaration of Conformity**

We declare under sole responsibility that this product conforms to the following relevant stipulations:

73/23/EWG, 89/336 EWG; 2002/95/EG; 2002/96/EG.

Applied harmonised norms: EN 60745-1:2003; EN 50144-2-7:2000; EN 55014-1:2002; EN 55014-2:2001; EN 61000-3-2:2005; EN 61000-3-3:2001

**CE Déclaration de conformité**

Nous déclarons sous notre responsabilité que ce produit est en conformité avec les réglementations suivantes : 73/23/EWG, 89/336 EWG; 2002/95/EG; 2002/96/EG.

Conforme aux normes et documents normalisés : EN 60745-1:2003; EN 50144-2-7:2000; EN 55014-1:2002; EN 55014-2:2001; EN 61000-3-2:2005; EN 61000-3-3:2001

**CE Conformiteitsverklaring**

Wij verklaren dat dit product voldoet aan de volgende normen: 73/23/EWG, 89/336 EWG; 2002/95/EG; 2002/96/EG.

En normatieve documenten: EN 60745-1:2003; EN 50144-2-7:2000; EN 55014-1:2002; EN 55014-2:2001; EN 61000-3-2:2005; EN 61000-3-3:2001



J. Wagner GmbH
Otto-Lilienthal-Str. 18
D-88677 Markdorf

A. Aepli
Division Manager

i. V. J. Ulbrich
Development Manager

D/A **J. Wagner GmbH**
Otto-Lilienthal-Str. 18
D-88677 Markdorf
Hotline: 0180/1 00 02 27
☎ +49/75 44/505-0 📠 +49/75 44/505-200

B **Wagner Spraytech Belgie**
Veilinglaan 58
1861 Meise-Wolvertem
☎ +32/2/2 69 46 75 📠 +32/2/2 69 78 45

GB **Wagner Spraytech (UK) Ltd.**
Haslemere Way,
Tramway Industrial Estate
Banbury, Oxon OX16 8TY
☎ +44/12 95/26 53 53 📠 +44/12 95/26 98 61

DK **Wagner Spraytech Scandinavia A/S**
Kornmarksvej 26
2605 Brøndby
☎ +45/43 27 18 18 📠 +45/43 43 05 28

CH **J. Wagner AG**
Industriestraße 22
9450 Altstätten
☎ +41/71/7 57 22 11 📠 +41/71/7 57 23 23

S **Wagner Sverige AB**
Muskötgatan 19
S-254 66 Helsingborg
☎ +46 42 15 00 20 📠 +46 42 15 00 35

NL **Wagner Spraytech Benelux B. V.**
Zoonebaan 10
3542 EC Utrecht
☎ +31/30/2 41 41 55 📠 +31/30/2 41 17 87

F **Wagner France S.a.r.l.**
5, Avenue du 1er Mai - B.P. 47
91122 Palaiseau-Cédex
☎ +33/1/69 19 46 50 📠 +33/1/69 81 72 57

CZ **Wagner Spol s.r.o.**
Nedašovská 345
15500 Praha 5
☎ +420/2/57 95 04 12 📠 +420/2/57 95 10 52

E **J. Wagner Spraytech Ibérica S.A.**
Ctra. N-340, Km 1245,4
08750 Molins de Rei (Barcelona)
☎ +34/93/6 80 00 28 📠 +34/93/6 68 01 56

SLO Adresa servisa:
GMA Elektromehanika d.o.o.
Cesta Andreja Bitenca 115,
Ljubljana 1000/Slovenien
☎ +386(1)/583 83 04 📠 +386(1)/518 38 03

H Magyarországi szerviz
Hondimpex KFT.
Kossuth L. u. 48-50
8060 Mór
☎ +36(-22)/407 321 📠 +36(-22)/407 852

PL **PUT Wagner Service**
ul. E. Imieli 14
41-605 Swietochlowice
☎ +48/32/2 45 06 19 📠 +48/32/2 41 42 51

HR Adresa servisa:
EL-ME-HO
Horvacanska 25
10000 Zagreb/Kroatien
☎ +385(-1) 3 01 02 68

AUS **Wagner Spraytech Australia Pty. Ltd.,**
14-16 Kevlar Close,
Braeside, VIC 3195/**Australia**
☎ +61/3/95 87 20 00 📠 +61/3/95 80 91 20

www.wagner-group.com

Änderungen vorbehalten.
Wijzigingen voorbehouden.
Sous réserve de modifications.
We reserve the right to make modifications.
Ci riserviamo cambiamenti.
Ret til ændringer forbeholdt.
Salvo modificaciones.